

Angels

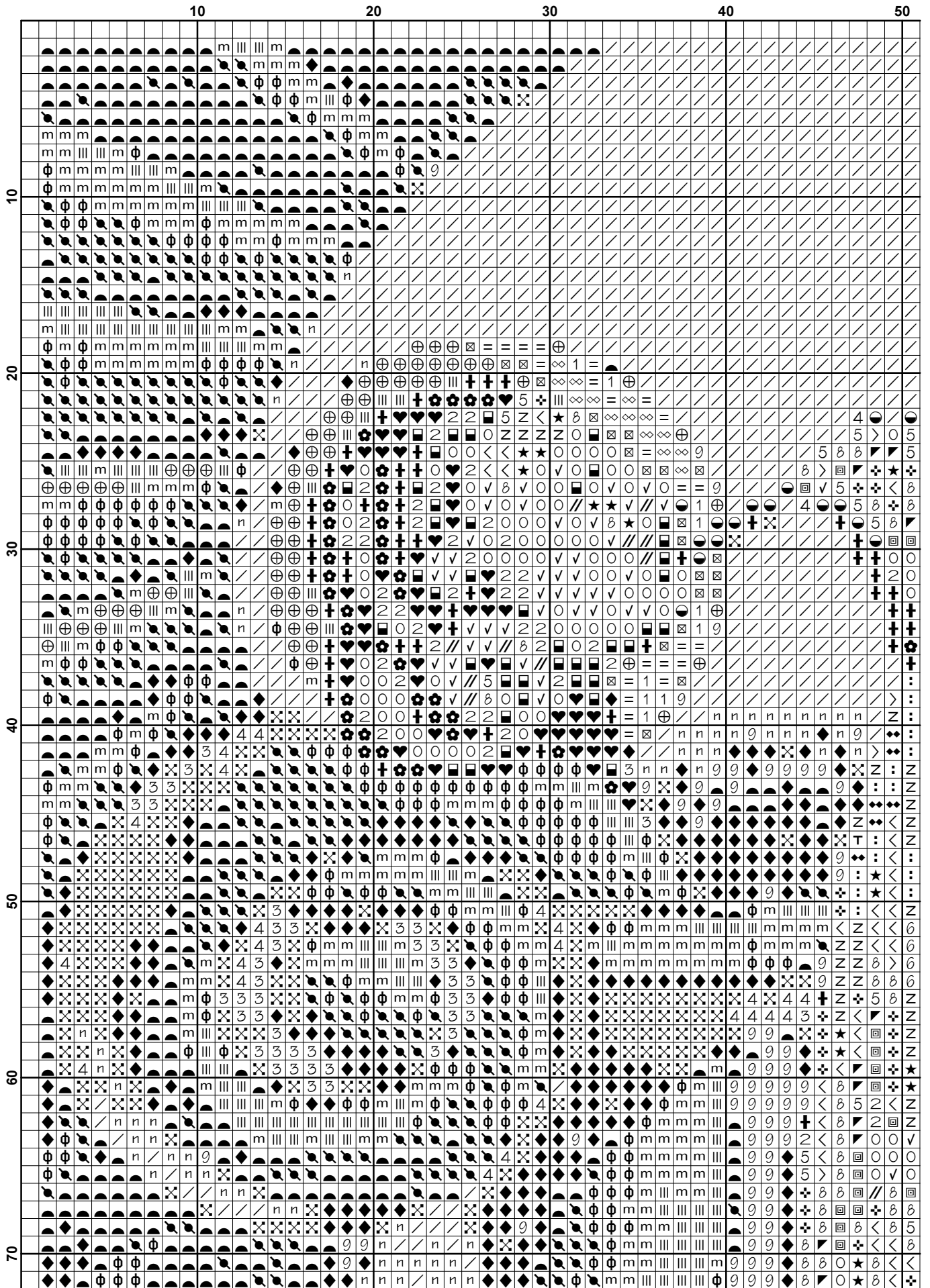
www.christiancrossstitch.com

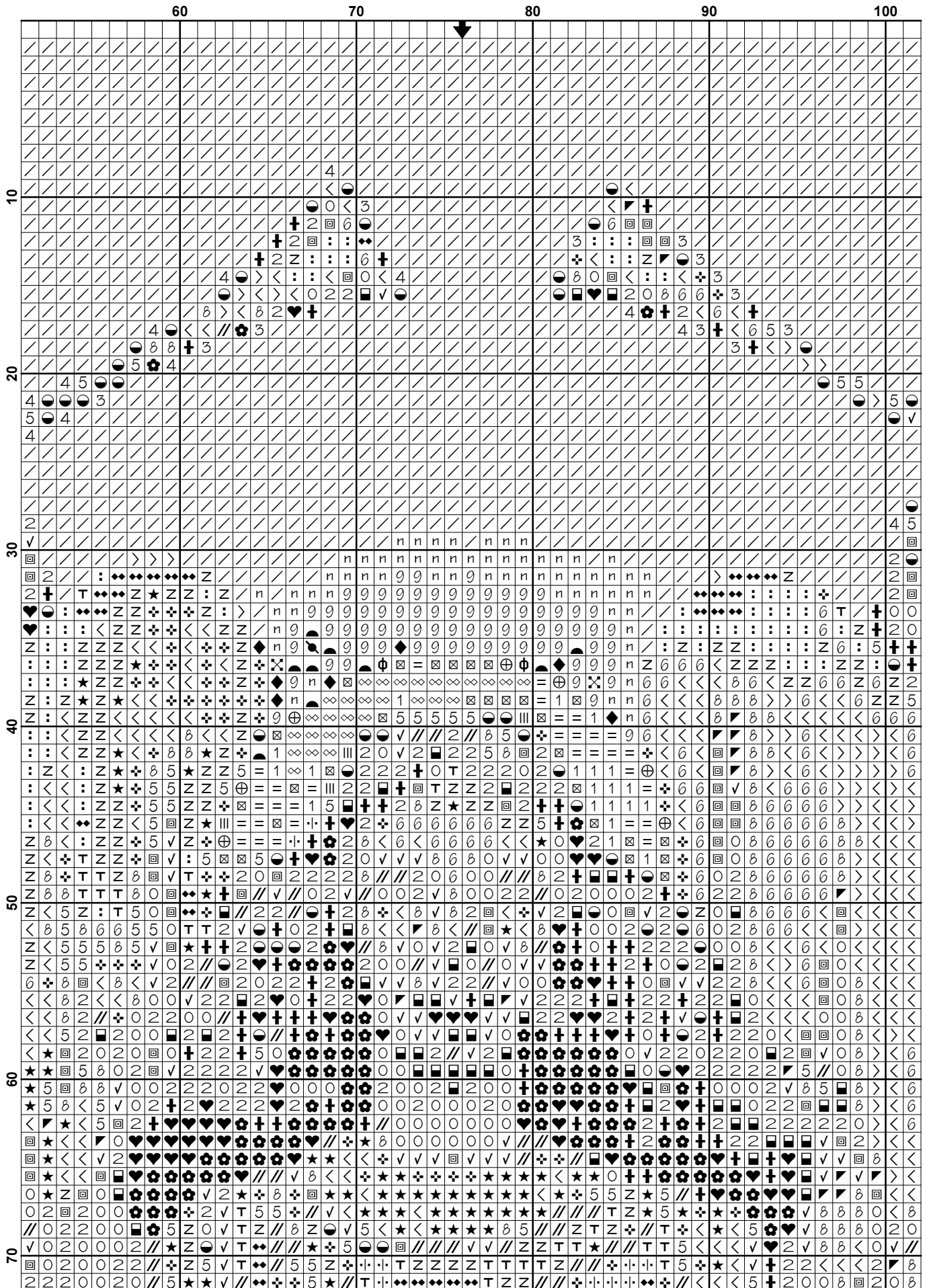


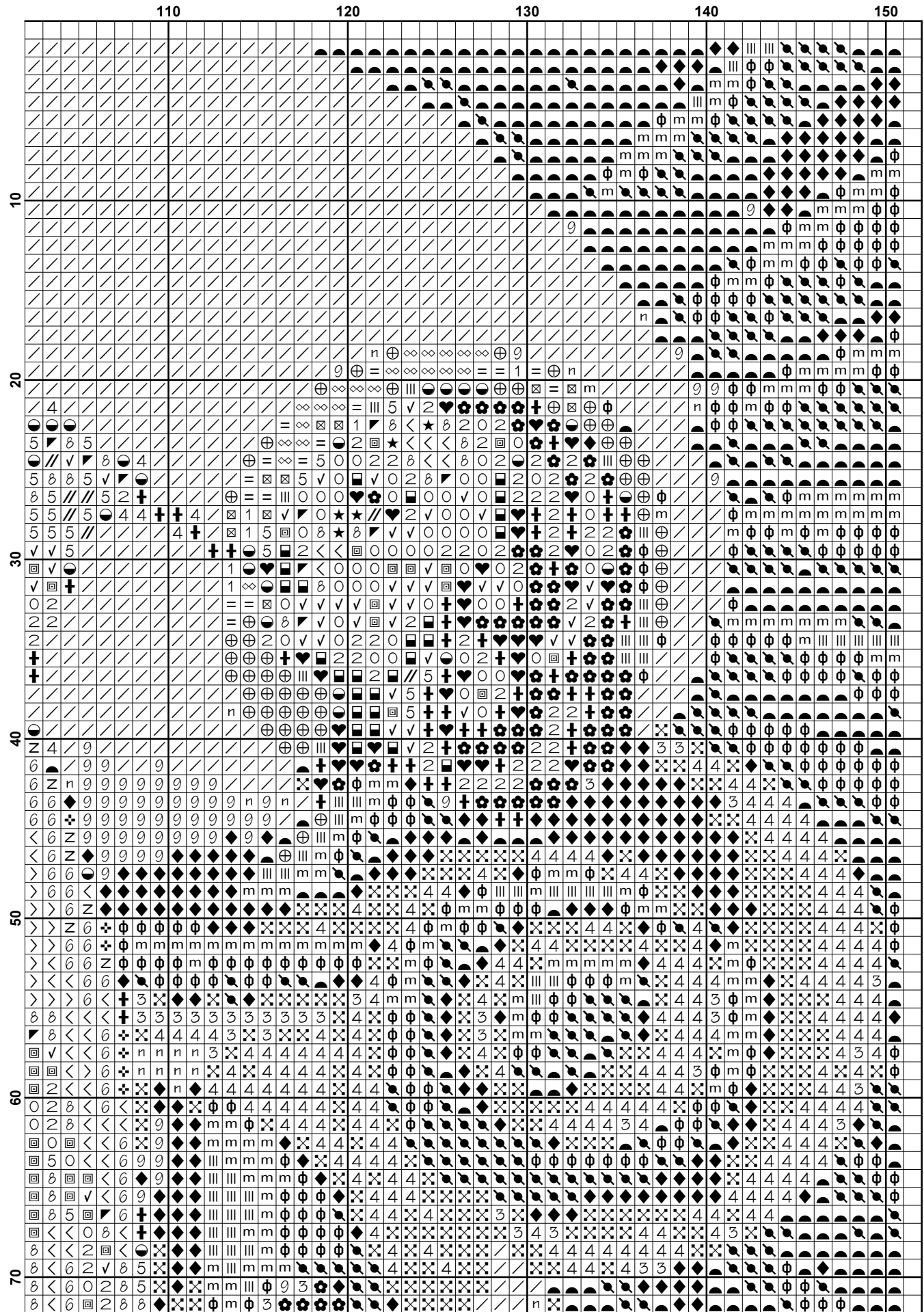
This pattern is offered totally free from Christian Cross Stitch. We offer one new free pattern on our website every Friday. Please see www.christiancrossstitch.com

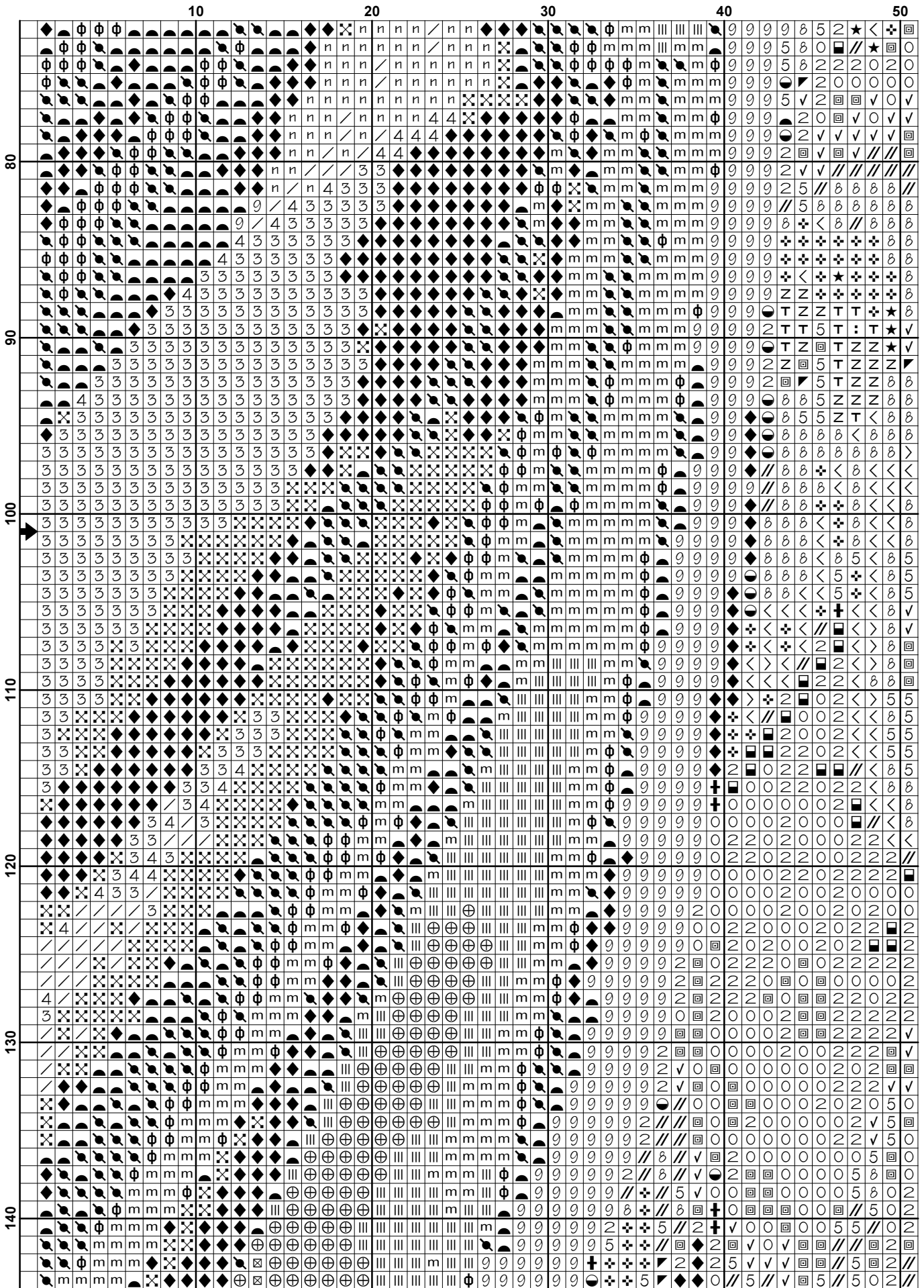
Please feel free to pass this pattern around to anyone for free. You cannot sell these patterns by themselves, however you can put the pattern together in a kit form and sell the kits or you can sell the completed stitched item.

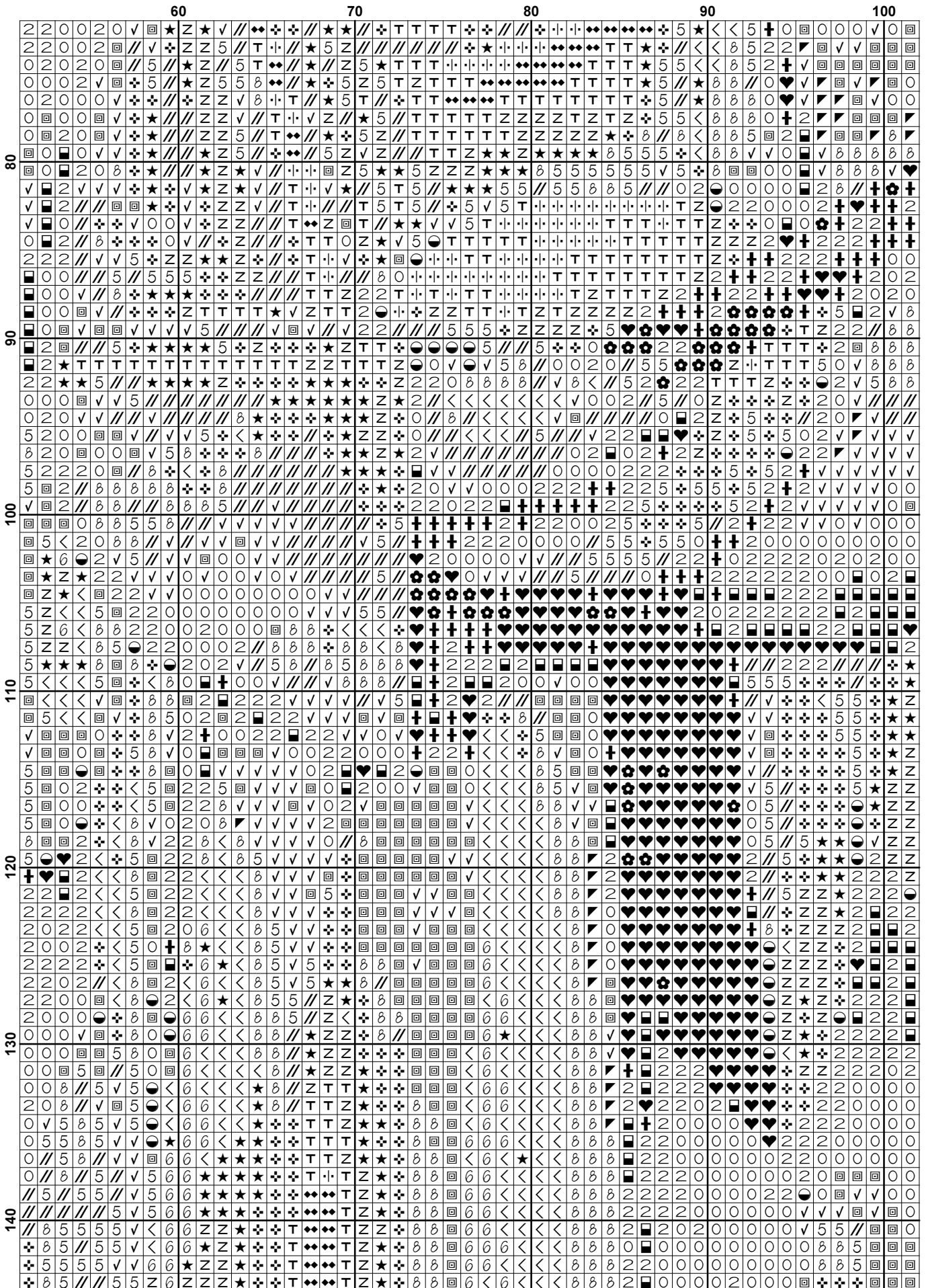
Also see our other website at www.freecrossstitchonline.com

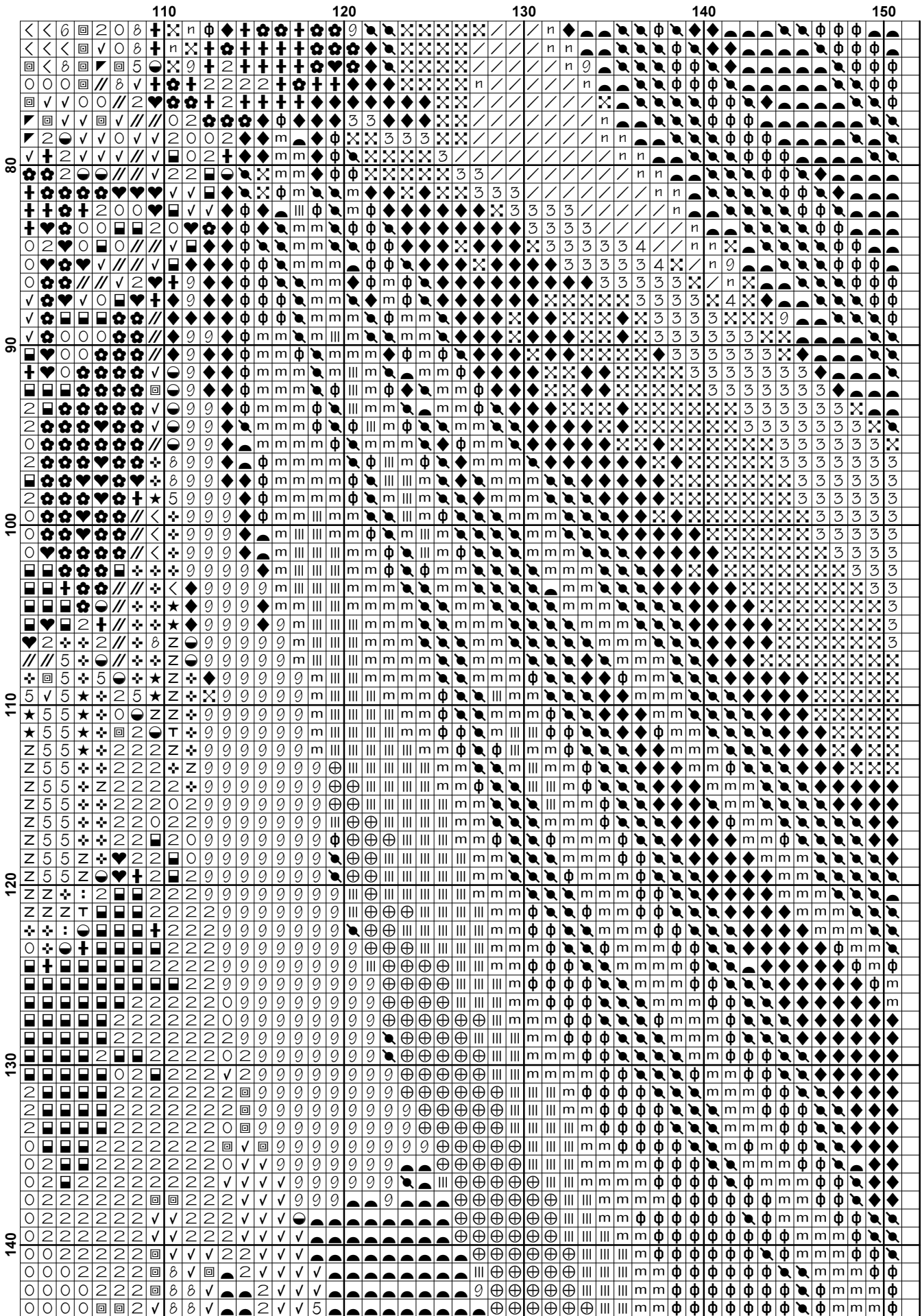













Pattern Name: Angels
Designed By: Image copyright Liquid Library
Company: Christian Cross Stitch
Copyright: Copyright Christian Cross Stitch Online. All rights Reserved.
Fabric: Aida 14, White
 150w X 200h Stitches
Size(s): 14 Count, 10-5/8w X 14-1/4h in
 16 Count, 9-3/8w X 12-1/2h in
 18 Count, 8-1/4w X 11h in

Floss Used for Full Stitches:

Symbol	Strands	Type	Number	Color
	2	DMC	155	Blue Violet-MD DK
	2	DMC	158	Cornflower Blue-MD VY DK
	2	DMC	301	Mahogany-MD
	2	DMC	333	Blue Violet-VY DK
	2	DMC	336	Navy Blue
	2	DMC	340	Blue Violet-MD
	2	DMC	341	Blue Violet-LT
	2	DMC	355	Terra Cotta-DK
	2	DMC	356	Terra Cotta-MD
	2	DMC	402	Mahogany-VY LT
	2	DMC	434	Brown-LT
	2	DMC	435	Brown-VY LT
	2	DMC	436	Tan
	2	DMC	745	Yellow-LT Pale
	2	DMC	775	Baby Blue-VY LT
	2	DMC	783	Topaz-MD
	2	DMC	791	Cornflower Blue-VY DK
	2	DMC	792	Cornflower Blue-DK
	2	DMC	796	Royal Blue-DK
	2	DMC	797	Royal Blue
	2	DMC	814	Garnet-DK
	2	DMC	815	Garnet-MD
	2	DMC	820	Royal Blue-VY DK
	2	DMC	823	Navy Blue-DK
	2	DMC	902	Garnet-VY DK
	2	DMC	918	Red Copper-DK
	2	DMC	921	Copper
	2	DMC	945	Tawny
	2	DMC	977	Golden Brown-LT
	2	DMC	3078	Golden Yellow-VY LT
	2	DMC	3746	Blue Violet-DK
	2	DMC	3747	Blue Violet-VY LT
	2	DMC	3756	Baby Blue-UL VY LT
	2	DMC	3776	Mahogany-LT
	2	DMC	3822	Straw-LT
	2	DMC	3823	Yellow-UL Pale
	2	DMC	3827	Golden Brown-Pale
	2	DMC	3830	Terra Cotta-MD
	2	DMC	3854	Autumn Gold-MD
	2	DMC	3856	Mahogany-UL VY LT
	2	DMC	3857	Rosewood-DK
	2	DMC	3865	Winter White

Notes:

Copyright Christian Cross Stitch Online. All rights Reserved.

You should begin at the centre of the pattern. Follow the arrows at the top and on the left to find the centre. Look in the corners to see the numbers in brackets to put the patterns together.

As the pattern has a few pages, the easiest way to stitch it is to stitch one page at a time.

This pattern is offered totally free from Christian Cross Stitch. We offer one new free pattern on our website every Friday. Please see www.christiancrossstitch.com

Please feel free to pass this pattern around to anyone for free. You cannot sell these patterns by themselves, however you can put the pattern together in a kit form and sell the kits with the fabric and floss or you can sell the completed stitched item. You cannot claim the pattern as your own or alter it in anyway and Christian Cross Stitch will not accept any liability for the sale of kits or completed items.

We also have another website at www.freecrossstitchonline.com

Usage Summary

Strands Per Skein: 6
Skein Length: 313.0 in

Type	Number	Full	Half	Quarter	Petite	Back(in)	Str(in)	Spec(in)	French	Bead	Skein Est.
DMC 155	155	1243	0	0	0	0.0	0.0	0.0	0	0	1.000
DMC 158	158	1443	0	0	0	0.0	0.0	0.0	0	0	1.000
DMC 301	301	580	0	0	0	0.0	0.0	0.0	0	0	1.000
DMC 333	333	1412	0	0	0	0.0	0.0	0.0	0	0	1.000
DMC 336	336	295	0	0	0	0.0	0.0	0.0	0	0	1.000
DMC 340	340	789	0	0	0	0.0	0.0	0.0	0	0	1.000
DMC 341	341	777	0	0	0	0.0	0.0	0.0	0	0	1.000
DMC 355	355	999	0	0	0	0.0	0.0	0.0	0	0	1.000
DMC 356	356	485	0	0	0	0.0	0.0	0.0	0	0	1.000
DMC 402	402	480	0	0	0	0.0	0.0	0.0	0	0	1.000
DMC 434	434	253	0	0	0	0.0	0.0	0.0	0	0	1.000
DMC 435	435	602	0	0	0	0.0	0.0	0.0	0	0	1.000
DMC 436	436	970	0	0	0	0.0	0.0	0.0	0	0	1.000
DMC 745	745	720	0	0	0	0.0	0.0	0.0	0	0	1.000
DMC 775	775	73	0	0	0	0.0	0.0	0.0	0	0	1.000
DMC 783	783	78	0	0	0	0.0	0.0	0.0	0	0	1.000
DMC 791	791	989	0	0	0	0.0	0.0	0.0	0	0	1.000
DMC 792	792	1597	0	0	0	0.0	0.0	0.0	0	0	1.000
DMC 796	796	231	0	0	0	0.0	0.0	0.0	0	0	1.000
DMC 797	797	1171	0	0	0	0.0	0.0	0.0	0	0	1.000
DMC 814	814	435	0	0	0	0.0	0.0	0.0	0	0	1.000
DMC 815	815	362	0	0	0	0.0	0.0	0.0	0	0	1.000
DMC 820	820	3014	0	0	0	0.0	0.0	0.0	0	0	2.000
DMC 823	823	547	0	0	0	0.0	0.0	0.0	0	0	1.000
DMC 902	902	364	0	0	0	0.0	0.0	0.0	0	0	1.000
DMC 918	918	1048	0	0	0	0.0	0.0	0.0	0	0	1.000
DMC 921	921	106	0	0	0	0.0	0.0	0.0	0	0	1.000
DMC 945	945	408	0	0	0	0.0	0.0	0.0	0	0	1.000
DMC 977	977	763	0	0	0	0.0	0.0	0.0	0	0	1.000
DMC 3078	3078	201	0	0	0	0.0	0.0	0.0	0	0	1.000
DMC 3746	3746	1065	0	0	0	0.0	0.0	0.0	0	0	1.000
DMC 3747	3747	262	0	0	0	0.0	0.0	0.0	0	0	1.000
DMC 3756	3756	356	0	0	0	0.0	0.0	0.0	0	0	1.000
DMC 3776	3776	759	0	0	0	0.0	0.0	0.0	0	0	1.000
DMC 3822	3822	103	0	0	0	0.0	0.0	0.0	0	0	1.000
DMC 3823	3823	100	0	0	0	0.0	0.0	0.0	0	0	1.000
DMC 3827	3827	841	0	0	0	0.0	0.0	0.0	0	0	1.000
DMC 3830	3830	608	0	0	0	0.0	0.0	0.0	0	0	1.000
DMC 3854	3854	250	0	0	0	0.0	0.0	0.0	0	0	1.000
DMC 3856	3856	1239	0	0	0	0.0	0.0	0.0	0	0	1.000
DMC 3857	3857	370	0	0	0	0.0	0.0	0.0	0	0	1.000
DMC 3865	3865	1612	0	0	0	0.0	0.0	0.0	0	0	1.000