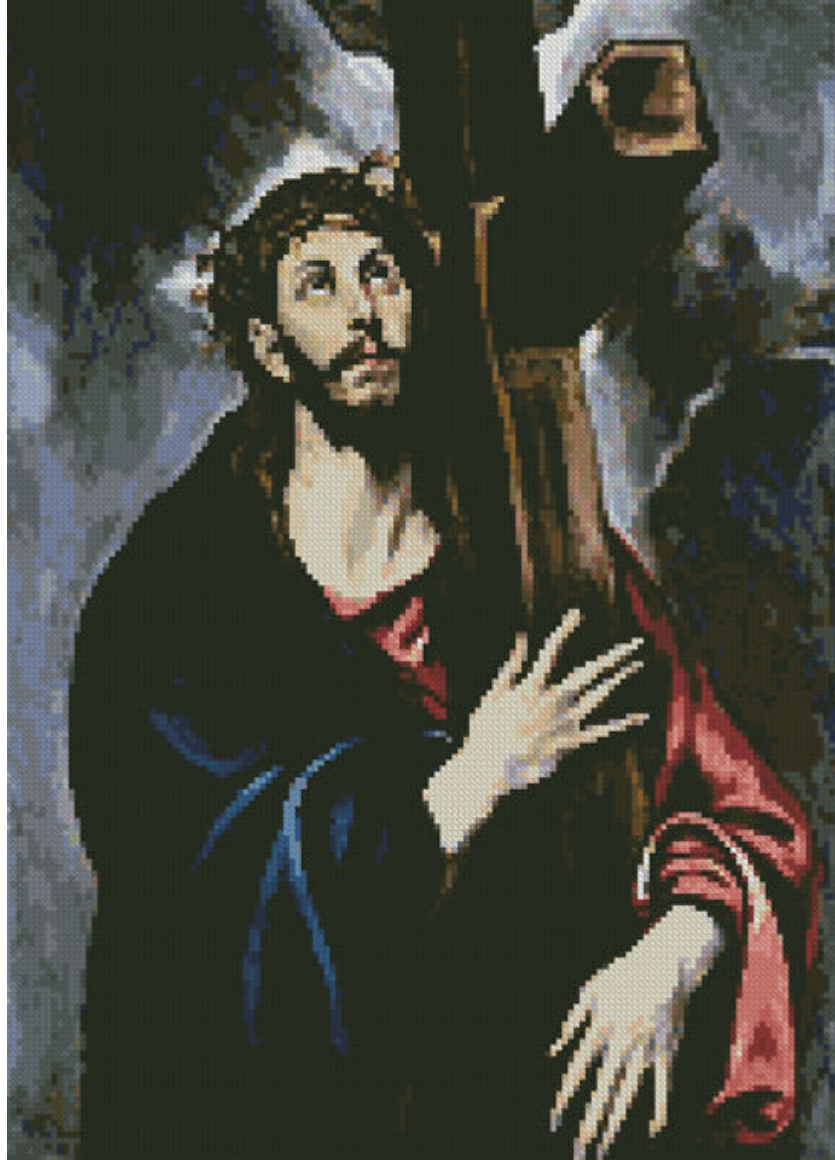


Christ Carrying the Cross

www.christiancrossstitch.com

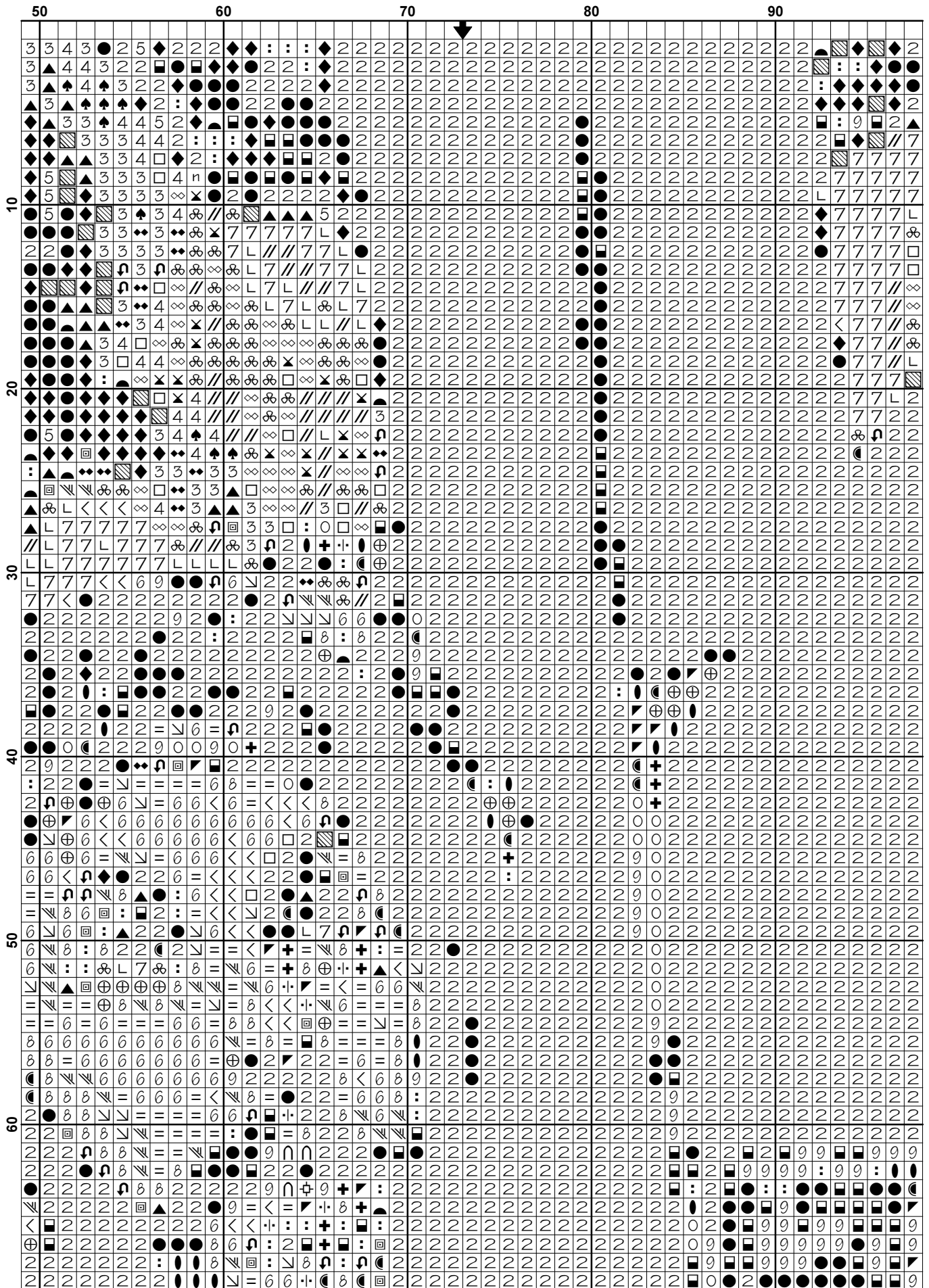


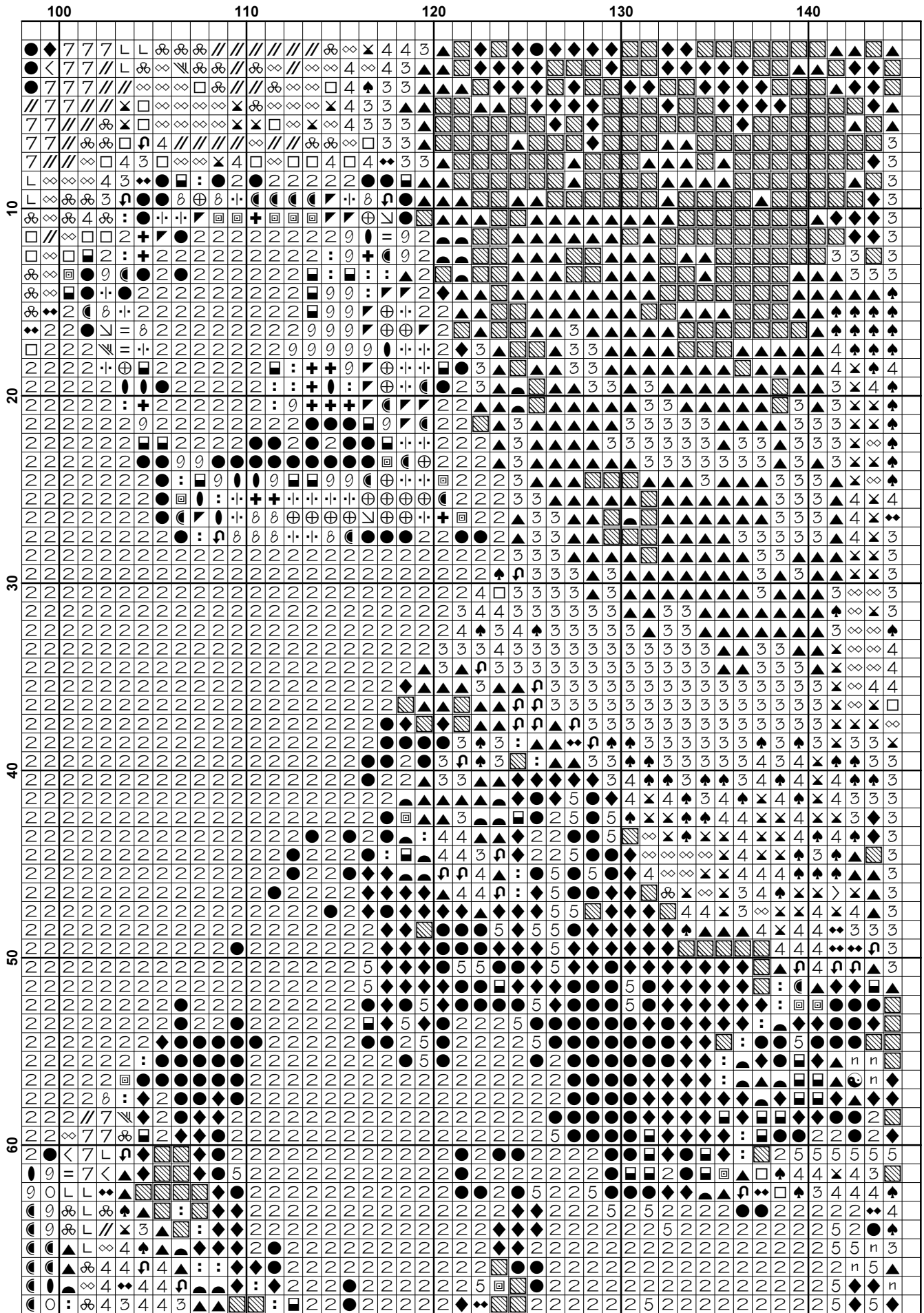
This pattern is offered totally free from Christian Cross Stitch. We offer one new free pattern on our website every Friday. Please see www.christiancrossstitch.com

Please feel free to pass this pattern around to anyone for free. You cannot sell these patterns by themselves, however you can put the pattern together in a kit form and sell the kits or you can sell the completed stitched item.

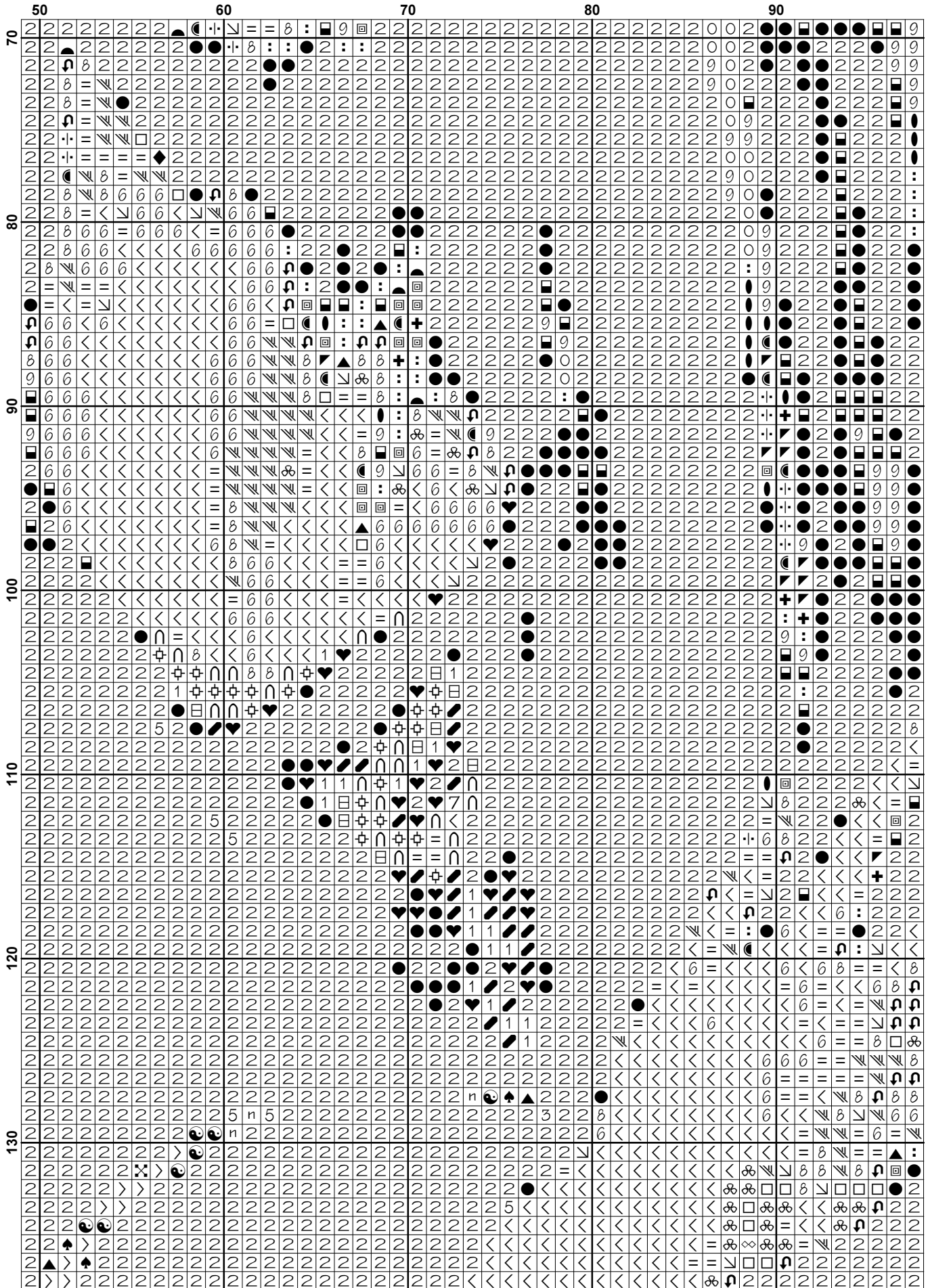
Also see our other website at www.freecrossstitchonline.com

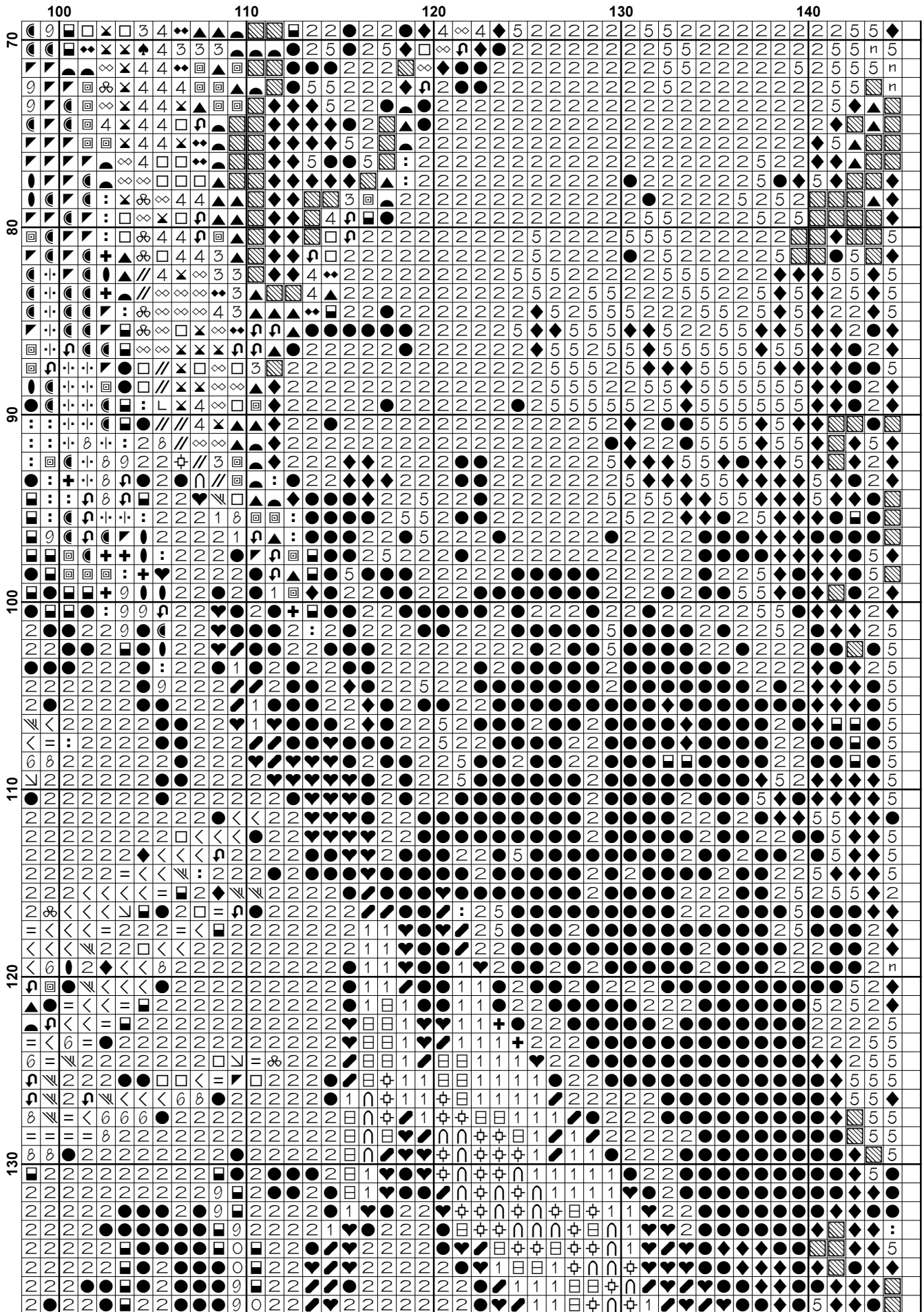


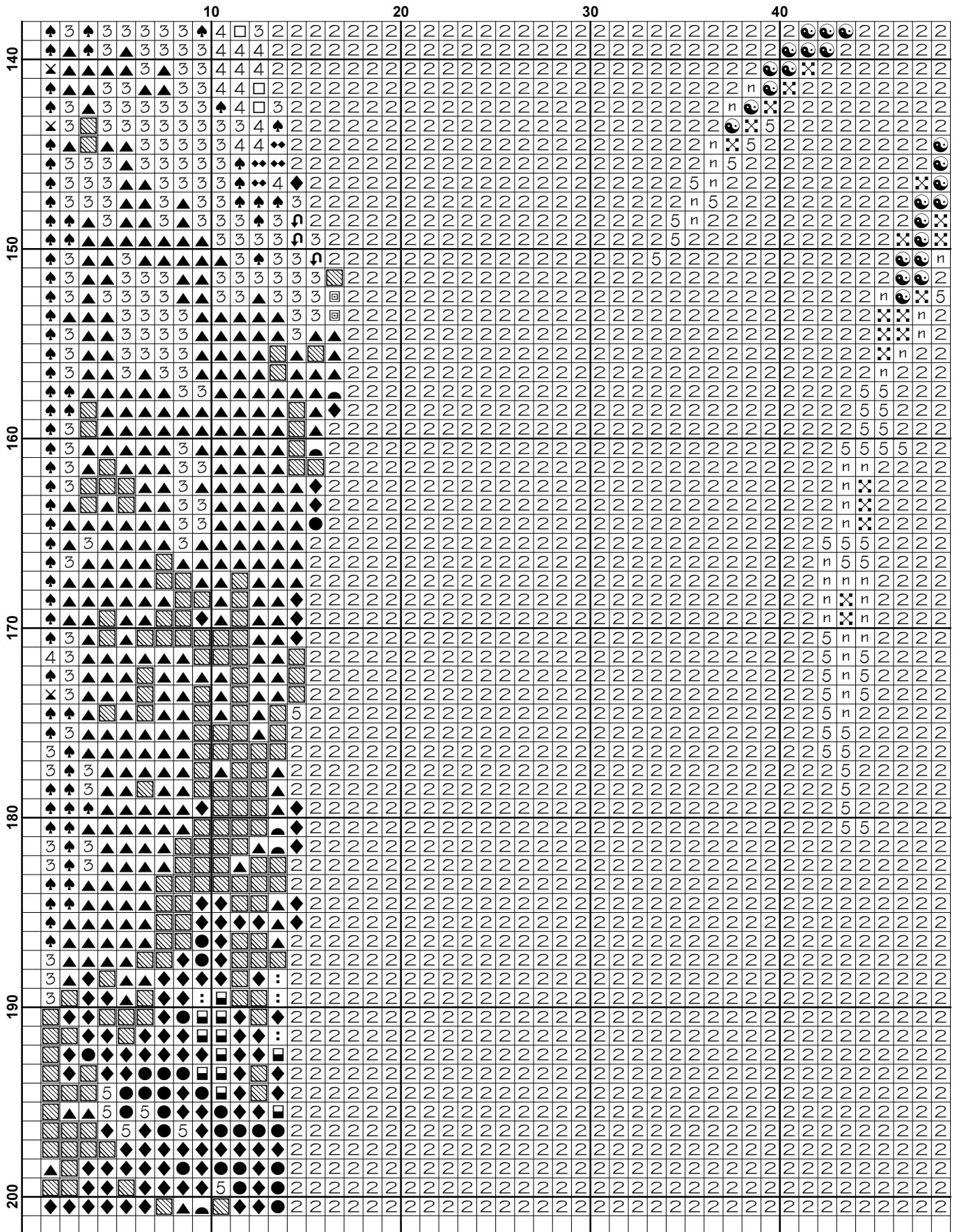


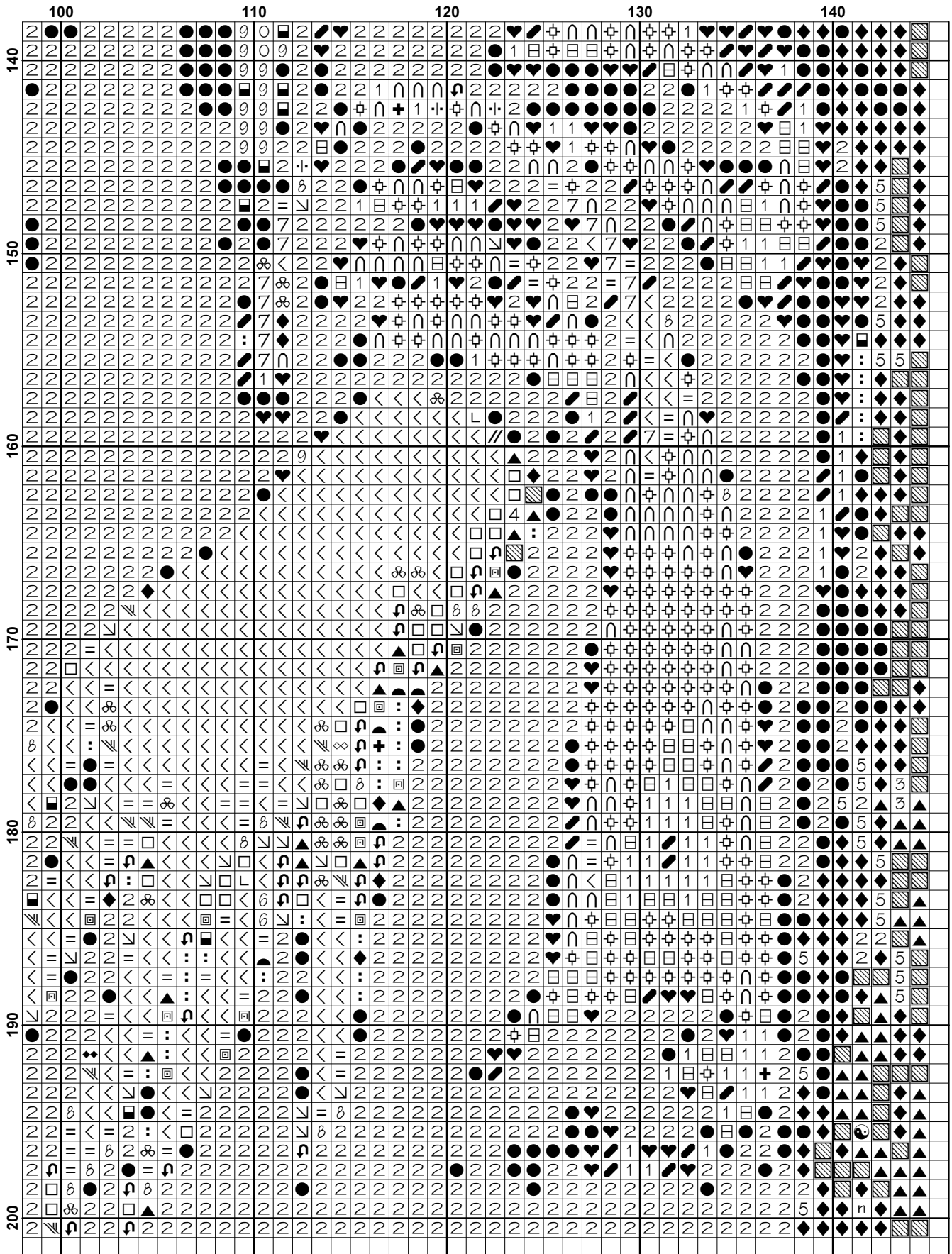


	10	20	30	40	
70	♠4	♠4	♠4	♠4	♠4
71	♠4	♠4	♠4	♠4	♠4
72	♠4	♠4	♠4	♠4	♠4
73	♠4	♠4	♠4	♠4	♠4
74	♠4	♠4	♠4	♠4	♠4
75	♠4	♠4	♠4	♠4	♠4
76	♠4	♠4	♠4	♠4	♠4
77	♠4	♠4	♠4	♠4	♠4
78	♠4	♠4	♠4	♠4	♠4
79	♠4	♠4	♠4	♠4	♠4
80	♠4	♠4	♠4	♠4	♠4
81	♠4	♠4	♠4	♠4	♠4
82	♠4	♠4	♠4	♠4	♠4
83	♠4	♠4	♠4	♠4	♠4
84	♠4	♠4	♠4	♠4	♠4
85	♠4	♠4	♠4	♠4	♠4
86	♠4	♠4	♠4	♠4	♠4
87	♠4	♠4	♠4	♠4	♠4
88	♠4	♠4	♠4	♠4	♠4
89	♠4	♠4	♠4	♠4	♠4
90	♠4	♠4	♠4	♠4	♠4
91	♠4	♠4	♠4	♠4	♠4
92	♠4	♠4	♠4	♠4	♠4
93	♠4	♠4	♠4	♠4	♠4
94	♠4	♠4	♠4	♠4	♠4
95	♠4	♠4	♠4	♠4	♠4
96	♠4	♠4	♠4	♠4	♠4
97	♠4	♠4	♠4	♠4	♠4
98	♠4	♠4	♠4	♠4	♠4
99	♠4	♠4	♠4	♠4	♠4
100	♠4	♠4	♠4	♠4	♠4
101	♠4	♠4	♠4	♠4	♠4
102	♠4	♠4	♠4	♠4	♠4
103	♠4	♠4	♠4	♠4	♠4
104	♠4	♠4	♠4	♠4	♠4
105	♠4	♠4	♠4	♠4	♠4
106	♠4	♠4	♠4	♠4	♠4
107	♠4	♠4	♠4	♠4	♠4
108	♠4	♠4	♠4	♠4	♠4
109	♠4	♠4	♠4	♠4	♠4
110	♠4	♠4	♠4	♠4	♠4
111	♠4	♠4	♠4	♠4	♠4
112	♠4	♠4	♠4	♠4	♠4
113	♠4	♠4	♠4	♠4	♠4
114	♠4	♠4	♠4	♠4	♠4
115	♠4	♠4	♠4	♠4	♠4
116	♠4	♠4	♠4	♠4	♠4
117	♠4	♠4	♠4	♠4	♠4
118	♠4	♠4	♠4	♠4	♠4
119	♠4	♠4	♠4	♠4	♠4
120	♠4	♠4	♠4	♠4	♠4
121	♠4	♠4	♠4	♠4	♠4
122	♠4	♠4	♠4	♠4	♠4
123	♠4	♠4	♠4	♠4	♠4
124	♠4	♠4	♠4	♠4	♠4
125	♠4	♠4	♠4	♠4	♠4
126	♠4	♠4	♠4	♠4	♠4
127	♠4	♠4	♠4	♠4	♠4
128	♠4	♠4	♠4	♠4	♠4
129	♠4	♠4	♠4	♠4	♠4
130	♠4	♠4	♠4	♠4	♠4
131	♠4	♠4	♠4	♠4	♠4
132	♠4	♠4	♠4	♠4	♠4
133	♠4	♠4	♠4	♠4	♠4
134	♠4	♠4	♠4	♠4	♠4
135	♠4	♠4	♠4	♠4	♠4
136	♠4	♠4	♠4	♠4	♠4
137	♠4	♠4	♠4	♠4	♠4
138	♠4	♠4	♠4	♠4	♠4
139	♠4	♠4	♠4	♠4	♠4
140	♠4	♠4	♠4	♠4	♠4









Pattern Name: Christ Carrying the Cross
Designed By: by El Greco
Company: Christian Cross Stitch
Copyright: Copyright Christian Cross Stitch Online. All rights Reserved.
Fabric: Aida 14, White
 144w X 200h Stitches
Size(s): 14 Count, 10-1/4w X 14-1/4h in
 16 Count, 9w X 12-1/2h in
 18 Count, 8w X 11h in

Floss Used for Full Stitches:

Symbol	Strands	Type	Number	Color
	2	DMC	159	Gray Blue-LT
	2	DMC	160	Gray Blue-MD
	2	DMC	168	Pewter-VY LT
	2	DMC	310	Black
	2	DMC	311	Navy Blue-MD
	2	DMC	312	Baby Blue-VY DK
	2	DMC	317	Pewter Gray
	2	DMC	318	Steel Gray-LT
	2	DMC	334	Baby Blue-MD
	2	DMC	336	Navy Blue
	2	DMC	413	Pewter Gray-DK
	2	DMC	414	Steel Gray-DK
	2	DMC	434	Brown-LT
	2	DMC	437	Tan-LT
	2	DMC	647	Beaver Gray-MD
	2	DMC	738	Tan-VY LT
	2	DMC	760	Salmon
	2	DMC	801	Coffee Brown-DK
	2	DMC	814	Garnet-DK
	2	DMC	815	Garnet-MD
	2	DMC	816	Garnet
	2	DMC	823	Navy Blue-DK
	2	DMC	839	Beige Brown-DK
	2	DMC	842	Beige Brown-VY LT
	2	DMC	945	Tawny
	2	DMC	951	Tawny-LT
	2	DMC	3031	Mocha Brown-VY DK
	2	DMC	3042	Antique Violet-LT
	2	DMC	3328	Salmon-DK
	2	DMC	3371	Black Brown
	2	DMC	3712	Salmon-MD
	2	DMC	3743	Antique Violet-VY LT
	2	DMC	3747	Blue Violet-VY LT
	2	DMC	3756	Baby Blue-UL VY LT
	2	DMC	3770	Tawny-VY LT
	2	DMC	3772	Desert Sand-VY DK
	2	DMC	3787	Brown Gray-DK
	2	DMC	3799	Pewter Gray-VY DK
	2	DMC	3858	Rosewood-MD
	2	DMC	3859	Rosewood-LT
	2	DMC	3860	Cocoa
	2	DMC	3861	Cocoa-LT
	2	DMC	3862	Mocha Beige-DK
	2	DMC	3863	Mocha Beige-MD
	2	DMC	3864	Mocha Beige-LT
	2	DMC	3865	Winter White

Copyright Christian Cross Stitch Online. All rights Reserved.

Notes:

You should begin at the centre of the pattern. Follow the arrows at the top and on the left to find the centre. Look in the corners to see the numbers in brackets to put the patterns together.

As the pattern has a few pages, the easiest way to stitch it is to stitch one page at a time.

This pattern is offered totally free from Christian Cross Stitch. We offer one new free pattern on our website every Friday. Please see www.christiancrossstitch.com

Please feel free to pass this pattern around to anyone for free. You cannot sell these patterns by themselves, however you can put the pattern together in a kit form and sell the kits with the fabric and floss or you can sell the completed stitched item. You cannot claim the pattern as your own or alter it in anyway and Christian Cross Stitch will not accept any liability for the sale of kits or completed items.

We also have another website at www.freecrossstitchonline.com

Usage Summary

Strands Per Skein: 6

Skein Length: 313.0 in

Type	Number	Full	Half	Quarter	Petite	Back(in)	Str(in)	Spec(in)	French	Bead	Skein Est.
DMC 159	159	164	0	0	0	0.0	0.0	0.0	0	0	1.000
DMC 160	160	609	0	0	0	0.0	0.0	0.0	0	0	1.000
DMC 168	168	166	0	0	0	0.0	0.0	0.0	0	0	1.000
DMC 310	310	15578	0	0	0	0.0	0.0	0.0	0	0	7.000
DMC 311	311	60	0	0	0	0.0	0.0	0.0	0	0	1.000
DMC 312	312	77	0	0	0	0.0	0.0	0.0	0	0	1.000
DMC 317	317	1199	0	0	0	0.0	0.0	0.0	0	0	1.000
DMC 318	318	264	0	0	0	0.0	0.0	0.0	0	0	1.000
DMC 334	334	39	0	0	0	0.0	0.0	0.0	0	0	1.000
DMC 336	336	92	0	0	0	0.0	0.0	0.0	0	0	1.000
DMC 413	413	869	0	0	0	0.0	0.0	0.0	0	0	1.000
DMC 414	414	1006	0	0	0	0.0	0.0	0.0	0	0	1.000
DMC 434	434	50	0	0	0	0.0	0.0	0.0	0	0	1.000
DMC 437	437	46	0	0	0	0.0	0.0	0.0	0	0	1.000
DMC 647	647	46	0	0	0	0.0	0.0	0.0	0	0	1.000
DMC 738	738	75	0	0	0	0.0	0.0	0.0	0	0	1.000
DMC 760	760	155	0	0	0	0.0	0.0	0.0	0	0	1.000
DMC 801	801	169	0	0	0	0.0	0.0	0.0	0	0	1.000
DMC 814	814	200	0	0	0	0.0	0.0	0.0	0	0	1.000
DMC 815	815	115	0	0	0	0.0	0.0	0.0	0	0	1.000
DMC 816	816	169	0	0	0	0.0	0.0	0.0	0	0	1.000
DMC 823	823	603	0	0	0	0.0	0.0	0.0	0	0	1.000
DMC 839	839	213	0	0	0	0.0	0.0	0.0	0	0	1.000
DMC 842	842	145	0	0	0	0.0	0.0	0.0	0	0	1.000
DMC 945	945	269	0	0	0	0.0	0.0	0.0	0	0	1.000
DMC 951	951	231	0	0	0	0.0	0.0	0.0	0	0	1.000
DMC 3031	3031	307	0	0	0	0.0	0.0	0.0	0	0	1.000
DMC 3042	3042	136	0	0	0	0.0	0.0	0.0	0	0	1.000
DMC 3328	3328	120	0	0	0	0.0	0.0	0.0	0	0	1.000
DMC 3371	3371	1943	0	0	0	0.0	0.0	0.0	0	0	1.000
DMC 3712	3712	261	0	0	0	0.0	0.0	0.0	0	0	1.000
DMC 3743	3743	152	0	0	0	0.0	0.0	0.0	0	0	1.000
DMC 3747	3747	99	0	0	0	0.0	0.0	0.0	0	0	1.000
DMC 3756	3756	58	0	0	0	0.0	0.0	0.0	0	0	1.000
DMC 3770	3770	931	0	0	0	0.0	0.0	0.0	0	0	1.000
DMC 3772	3772	74	0	0	0	0.0	0.0	0.0	0	0	1.000
DMC 3787	3787	85	0	0	0	0.0	0.0	0.0	0	0	1.000
DMC 3799	3799	1194	0	0	0	0.0	0.0	0.0	0	0	1.000
DMC 3858	3858	48	0	0	0	0.0	0.0	0.0	0	0	1.000
DMC 3859	3859	71	0	0	0	0.0	0.0	0.0	0	0	1.000
DMC 3860	3860	93	0	0	0	0.0	0.0	0.0	0	0	1.000
DMC 3861	3861	170	0	0	0	0.0	0.0	0.0	0	0	1.000
DMC 3862	3862	57	0	0	0	0.0	0.0	0.0	0	0	1.000
DMC 3863	3863	97	0	0	0	0.0	0.0	0.0	0	0	1.000
DMC 3864	3864	165	0	0	0	0.0	0.0	0.0	0	0	1.000
DMC 3865	3865	130	0	0	0	0.0	0.0	0.0	0	0	1.000