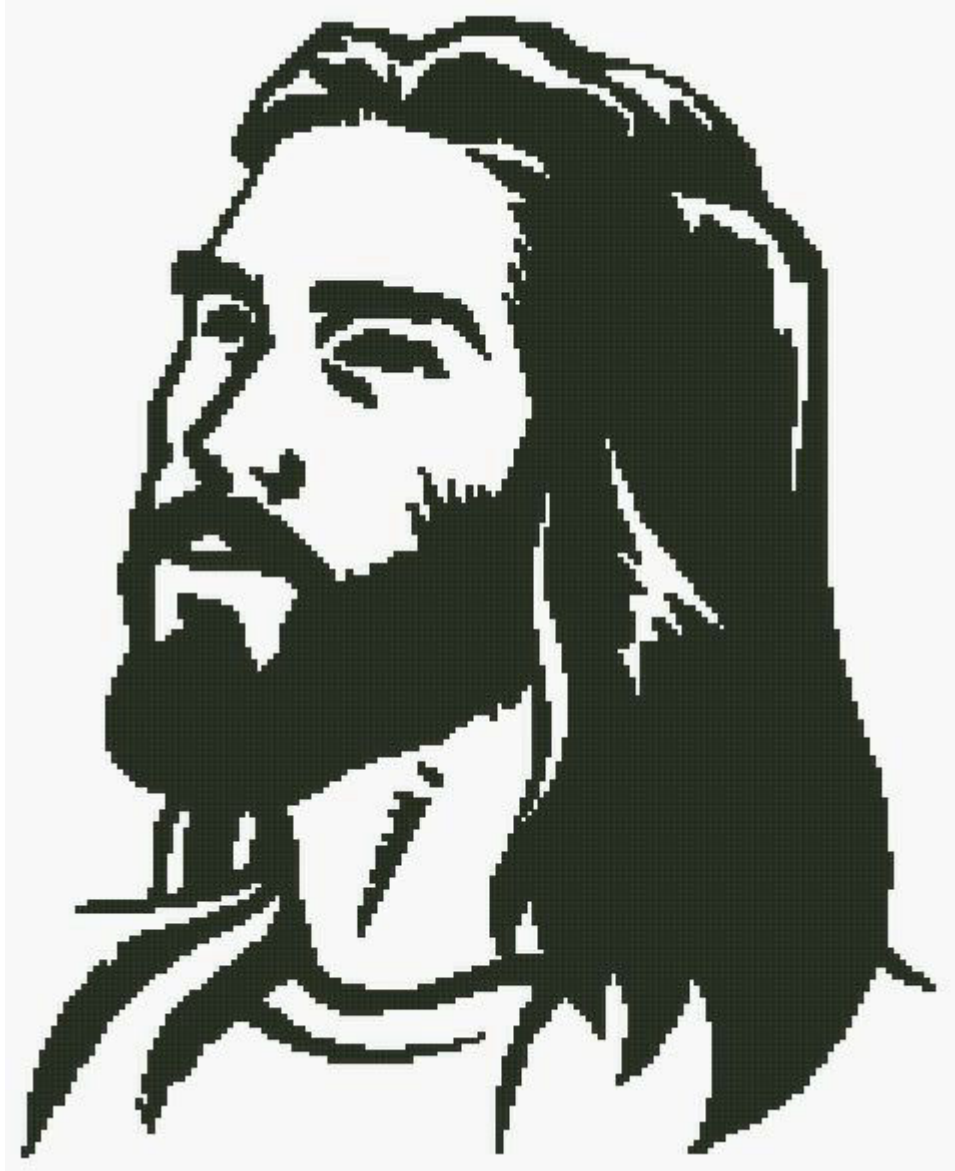


Jesus Silhouette

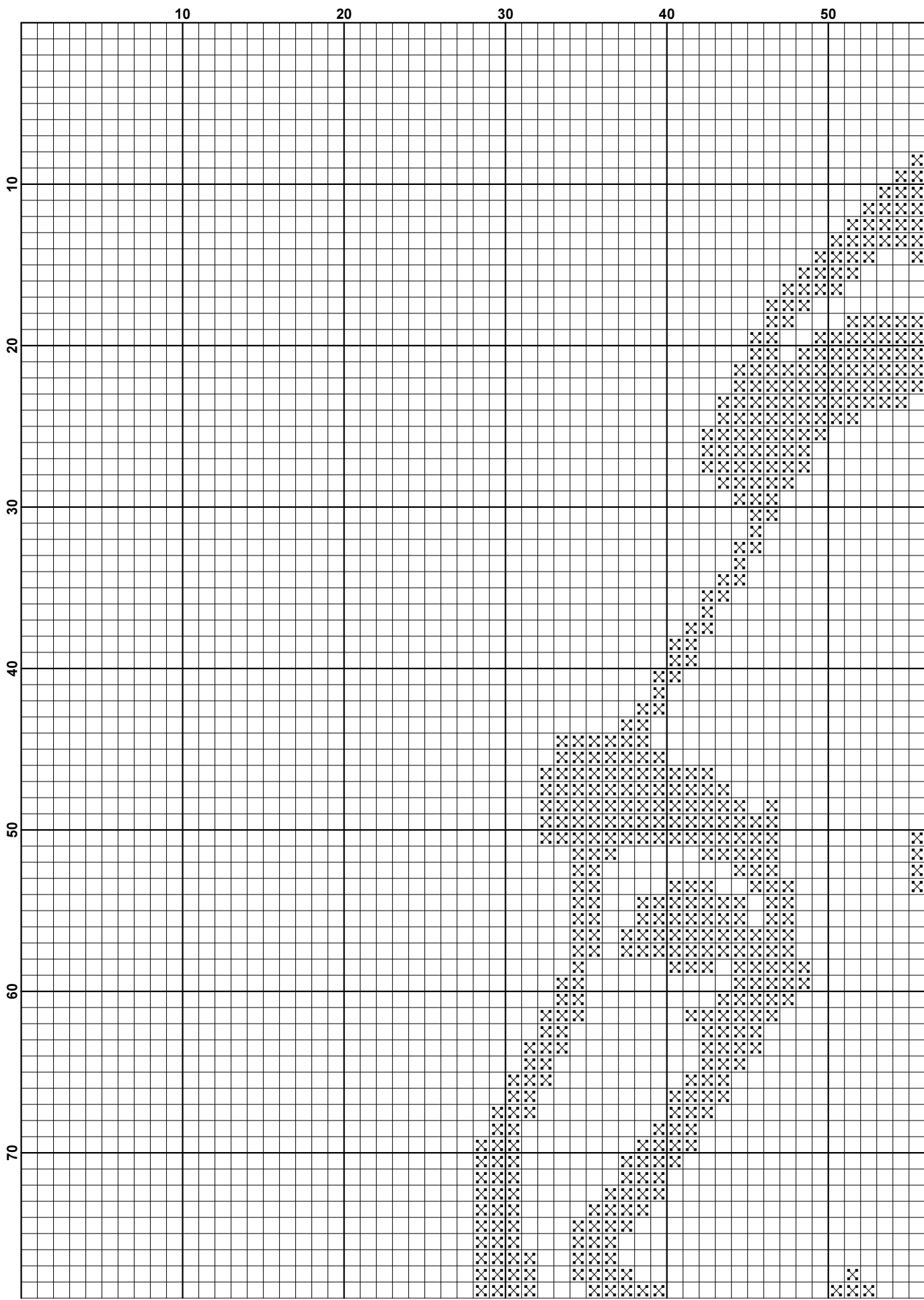
www.christiancrossstitch.com

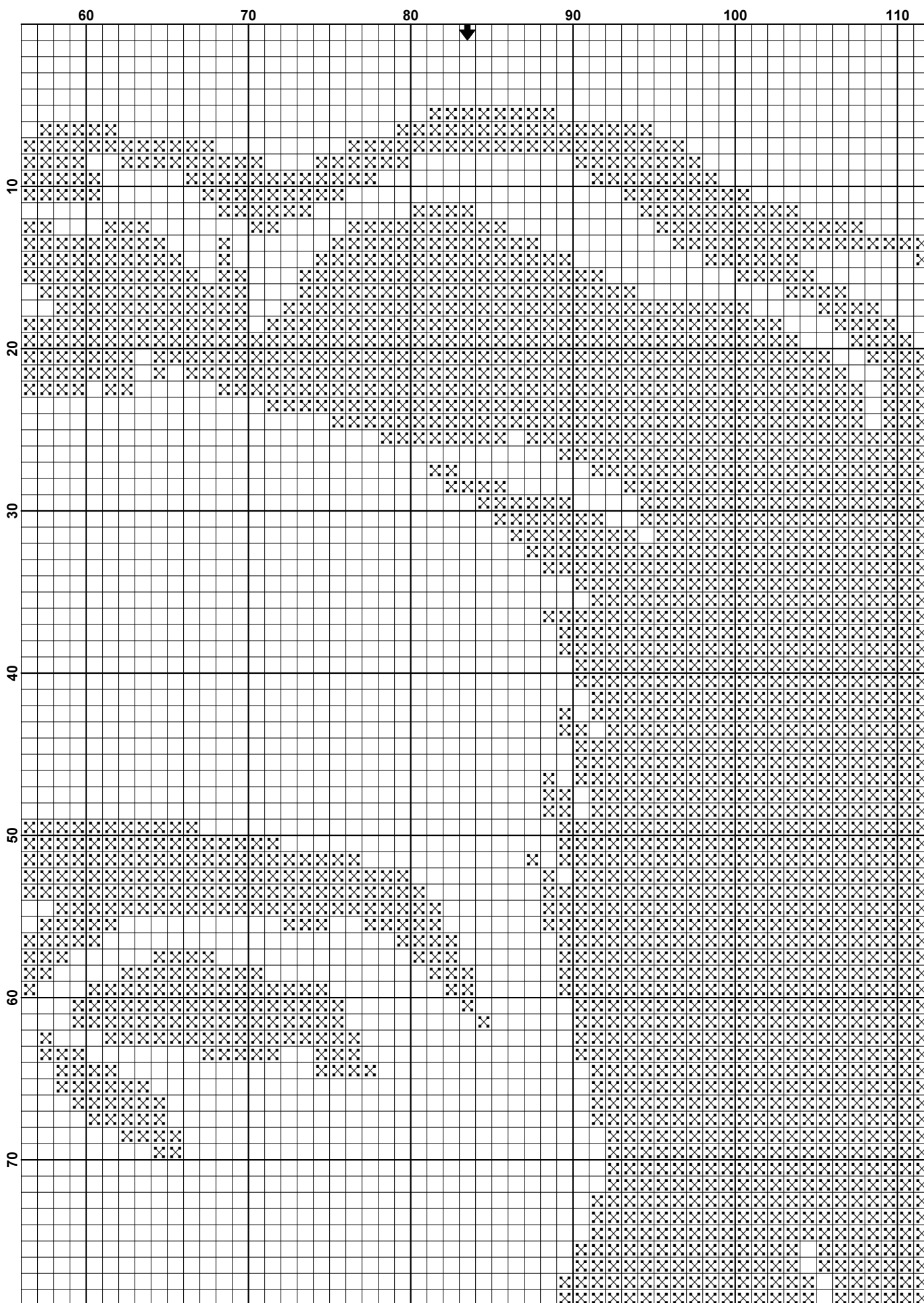


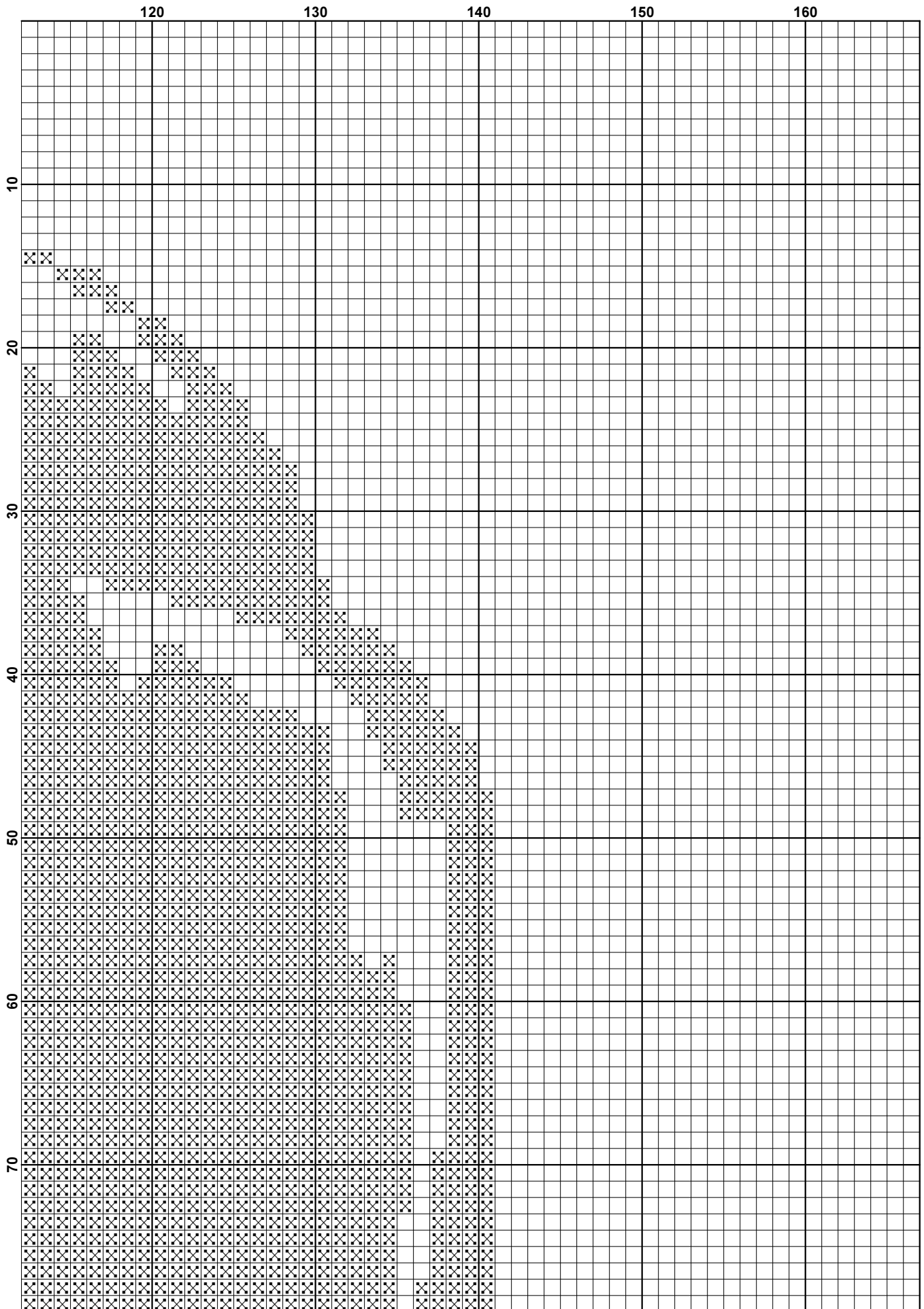
This pattern is offered totally free from Christian Cross Stitch. We offer one new free pattern on our website every Friday. Please see www.christiancrossstitch.com

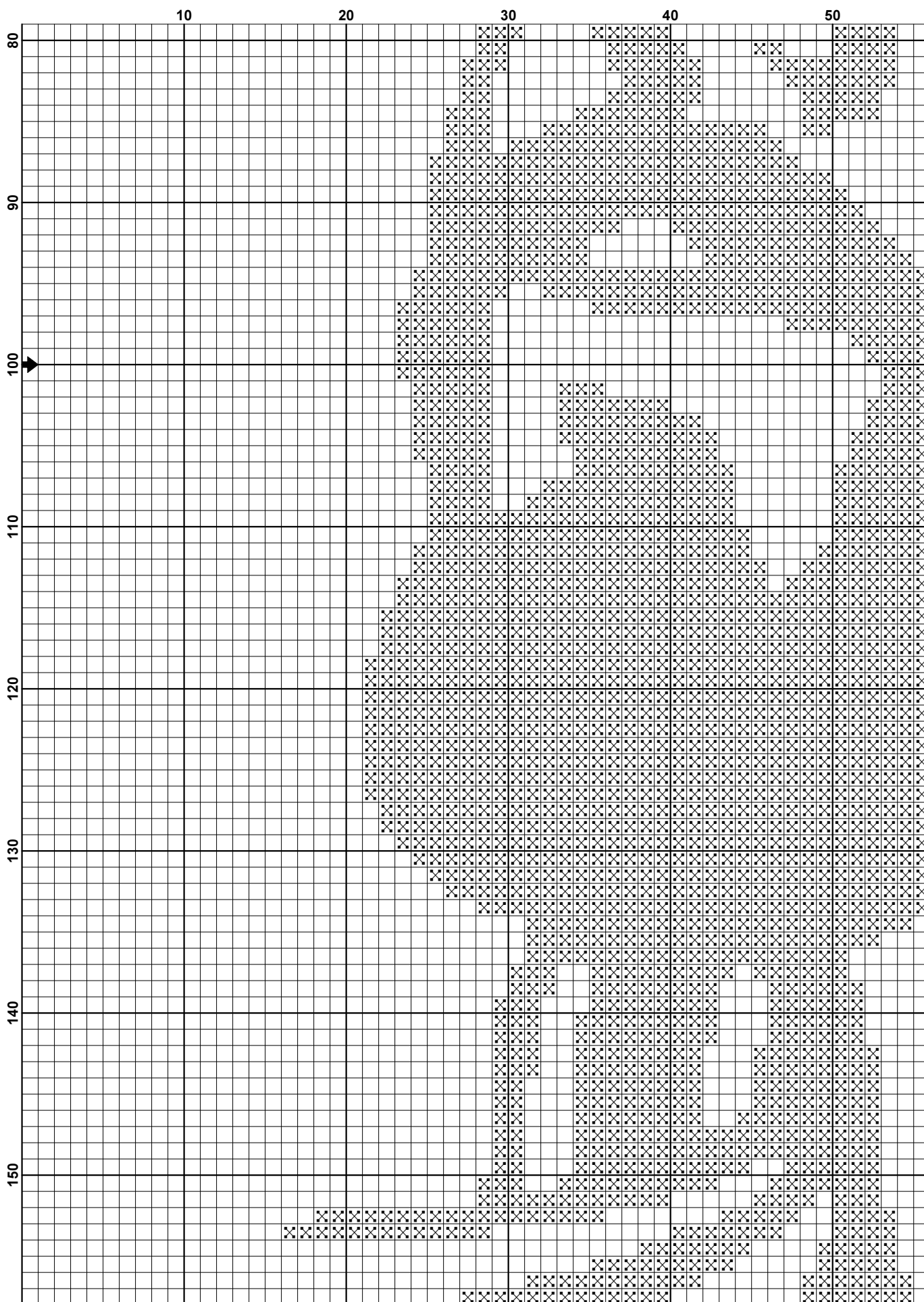
Please feel free to pass this pattern around to anyone for free. You cannot sell these patterns by themselves, however you can put the pattern together in a kit form and sell the kits or you can sell the completed stitched item.

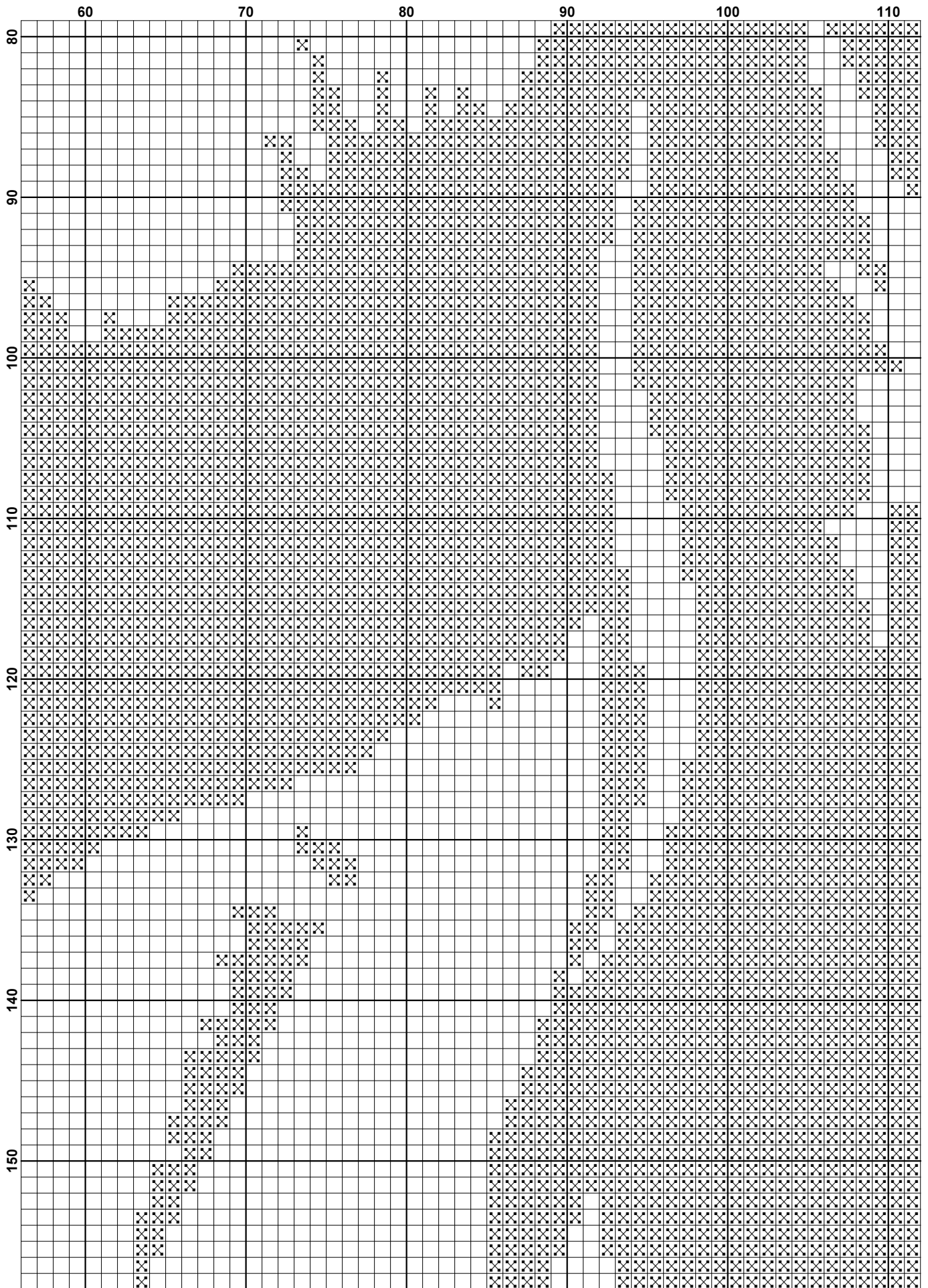
Also see our other website at www.freecrossstitchonline.com

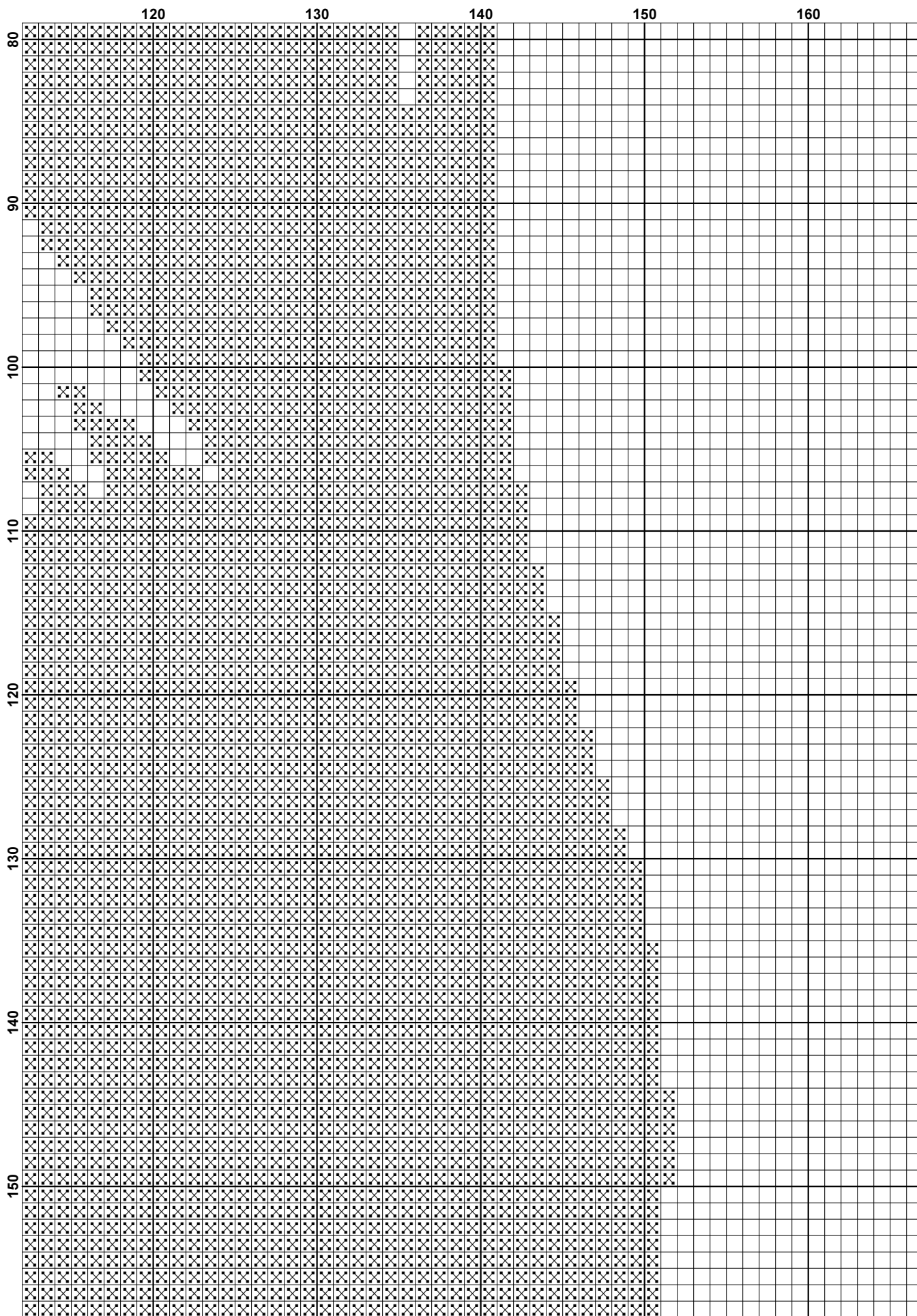


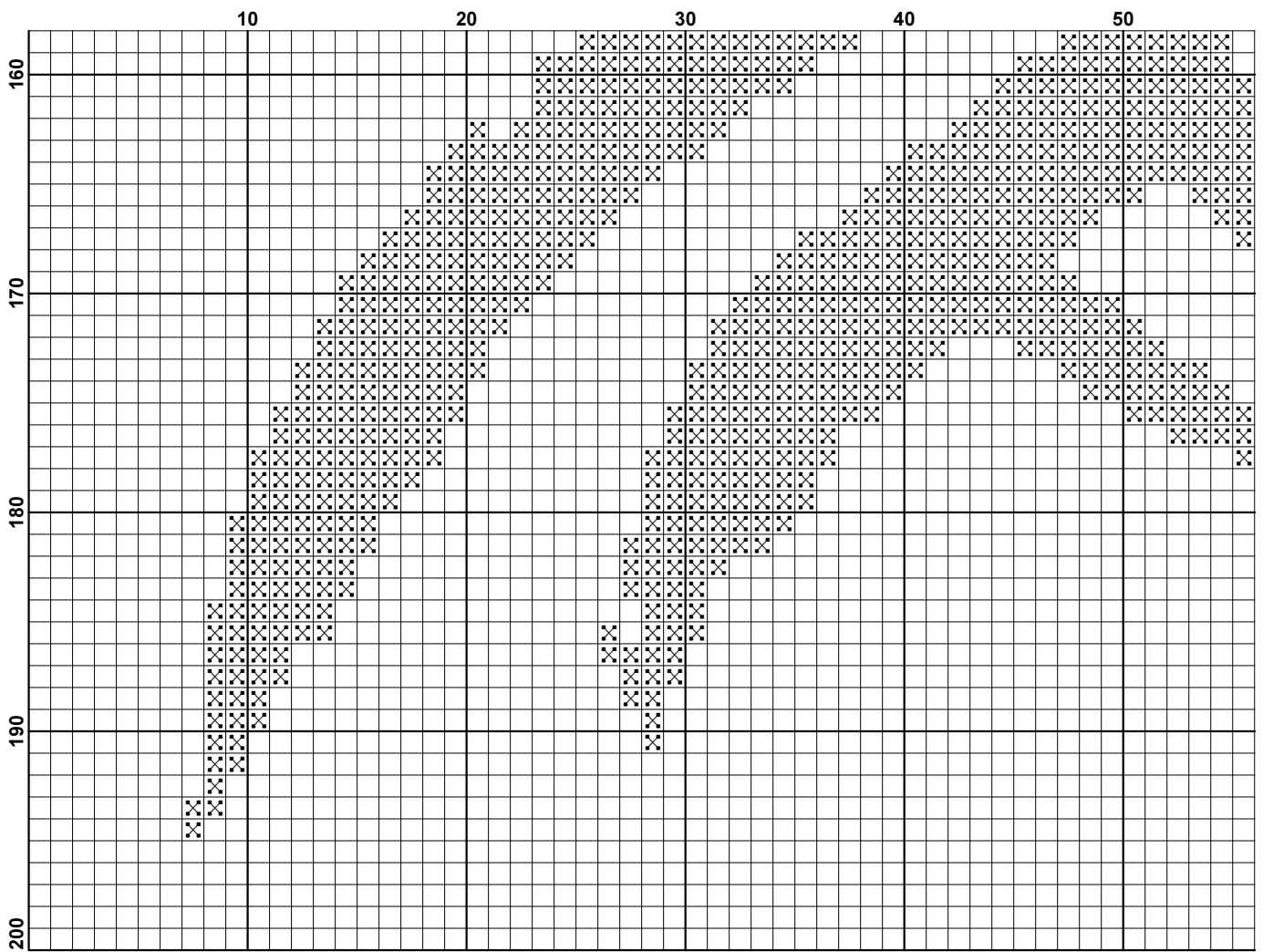


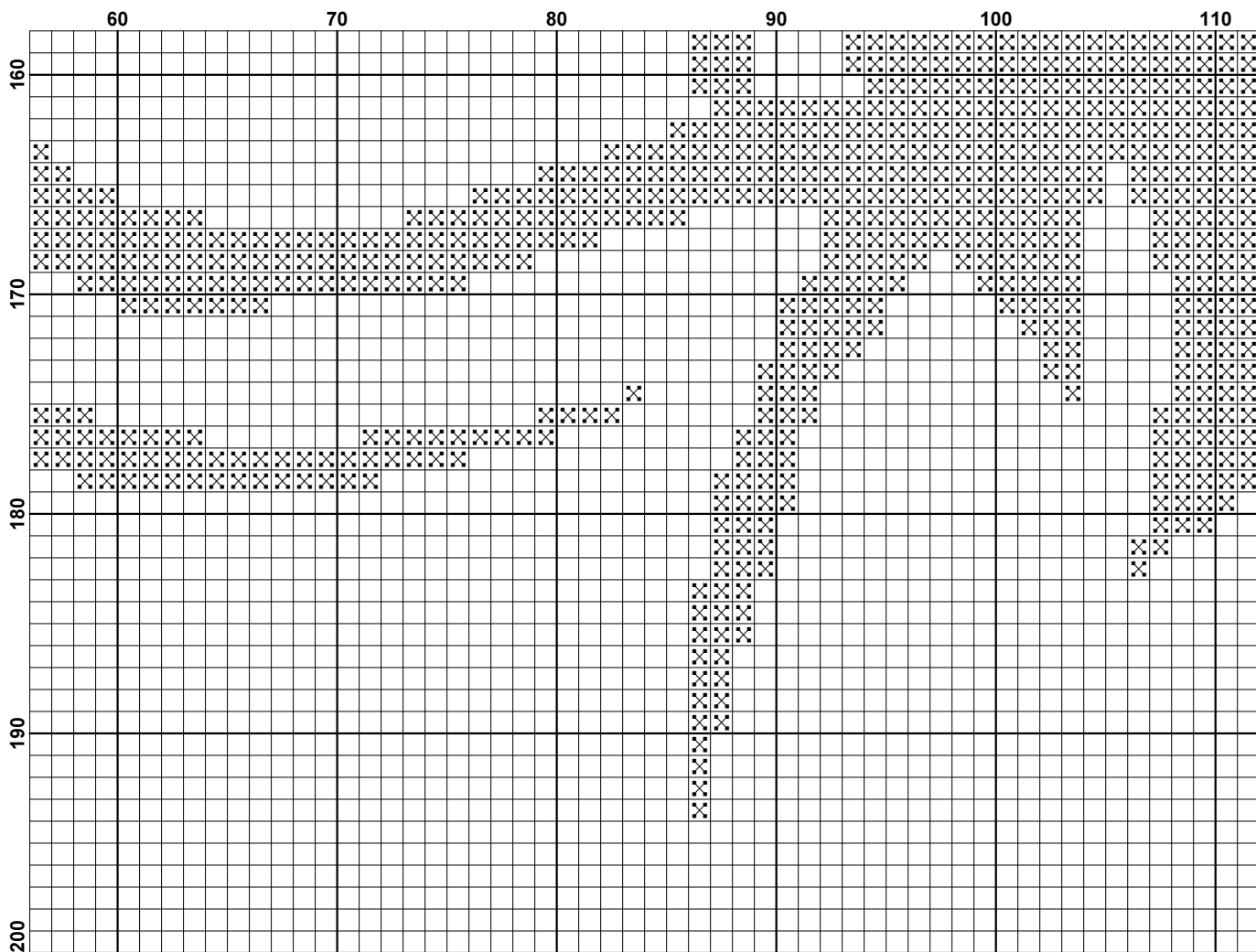


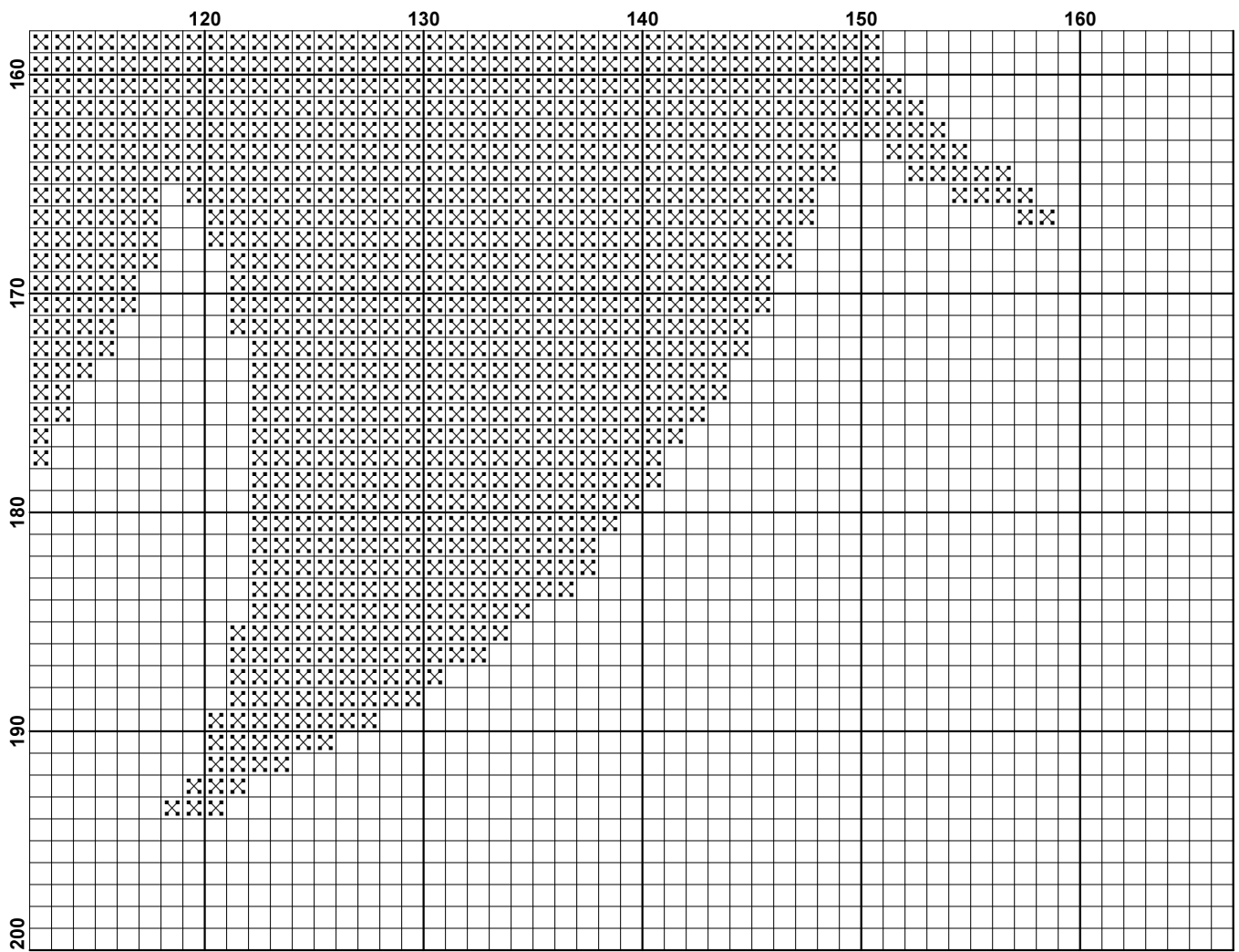












Pattern Name: Jesus Silhouette
Company: Christian Cross Stitch
Copyright: Copyright Christian Cross Stitch Online. All rights Reserved.
Fabric: Aida 14, White
152w X 190h Stitches
Size(s): 14 Count, 10-3/4w X 13-1/2h in
16 Count, 9-1/2w X 11-7/8h in
18 Count, 8-3/8w X 10-1/2h in

Floss Used for Full Stitches:

Symbol	Strands	Type	Number	Color
■ X	2	DMC	310	Black

Notes:

You should begin at the centre of the pattern. Follow the arrows at the top and on the left to find the centre. Look in the corners to see the numbers in brackets to put the patterns together.

As the pattern has a few pages, the easiest way to stitch it is to stitch one page at a time.

This pattern is offered totally free from Christian Cross Stitch. We offer one new free pattern on our website every Friday. Please see www.christiancrossstitch.com
Please feel free to pass this pattern around to anyone for free. You cannot sell these patterns by themselves, however you can put the pattern together in a kit form and sell the kits with the fabric and floss or you can sell the completed stitched item. You cannot claim the pattern as your own or alter it in anyway and Christian Cross Stitch will not accept any liability for the sale of kits or completed items.
We also have another website at www.freecrossstitchonline.com

Usage Summary

Strands Per Skein: 6

Skein Length: 313.0 in

Type	Number	Full	Half	Quarter	Petite	Back(in)	Str(in)	Spec(in)	French	Bead	Skein Est.
■ DMC	310	13293	0	0	0	0.0	0.0	0.0	0	0	6.000