

Jesus with Lambs

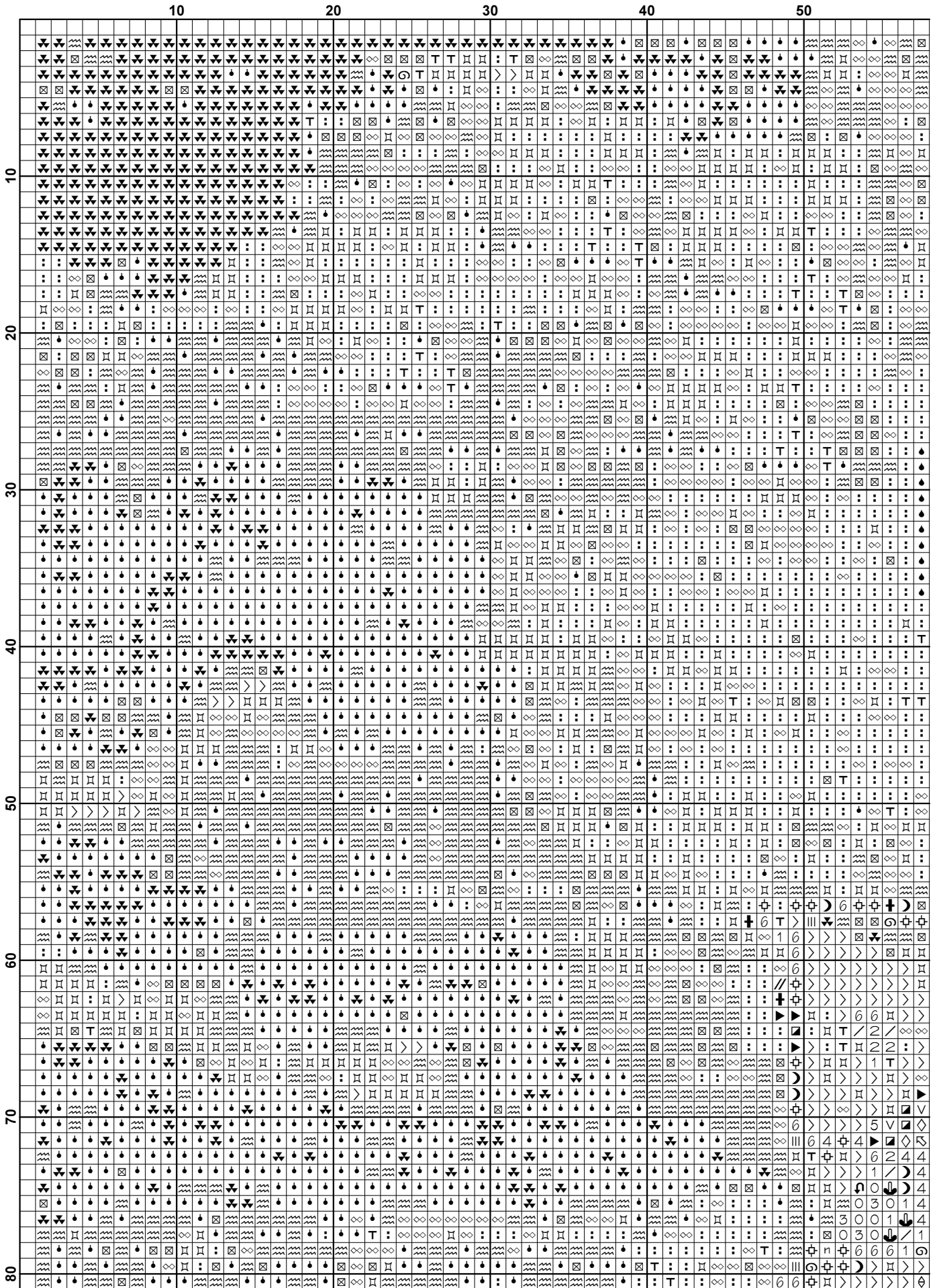
www.christiancrossstitch.com

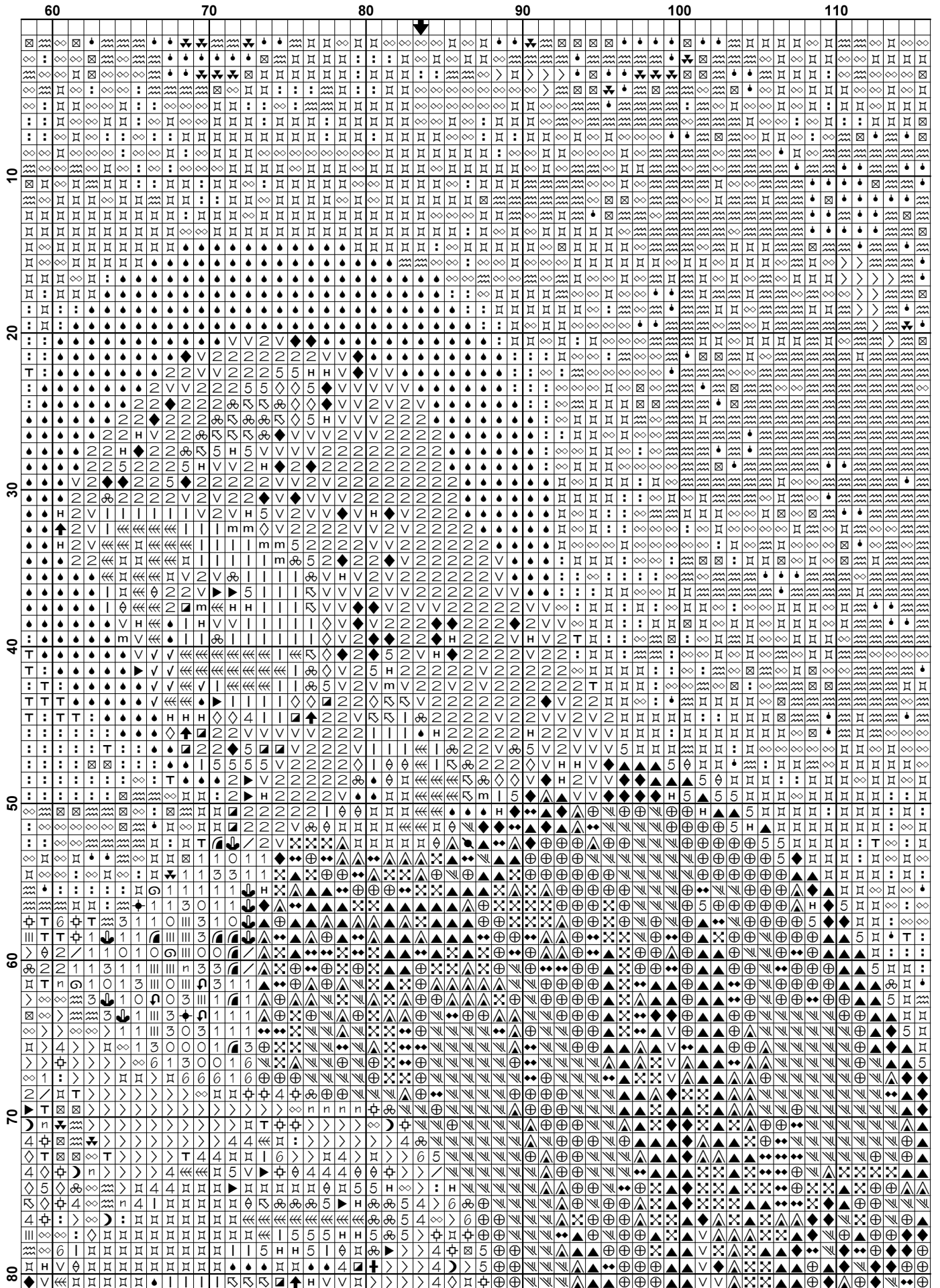


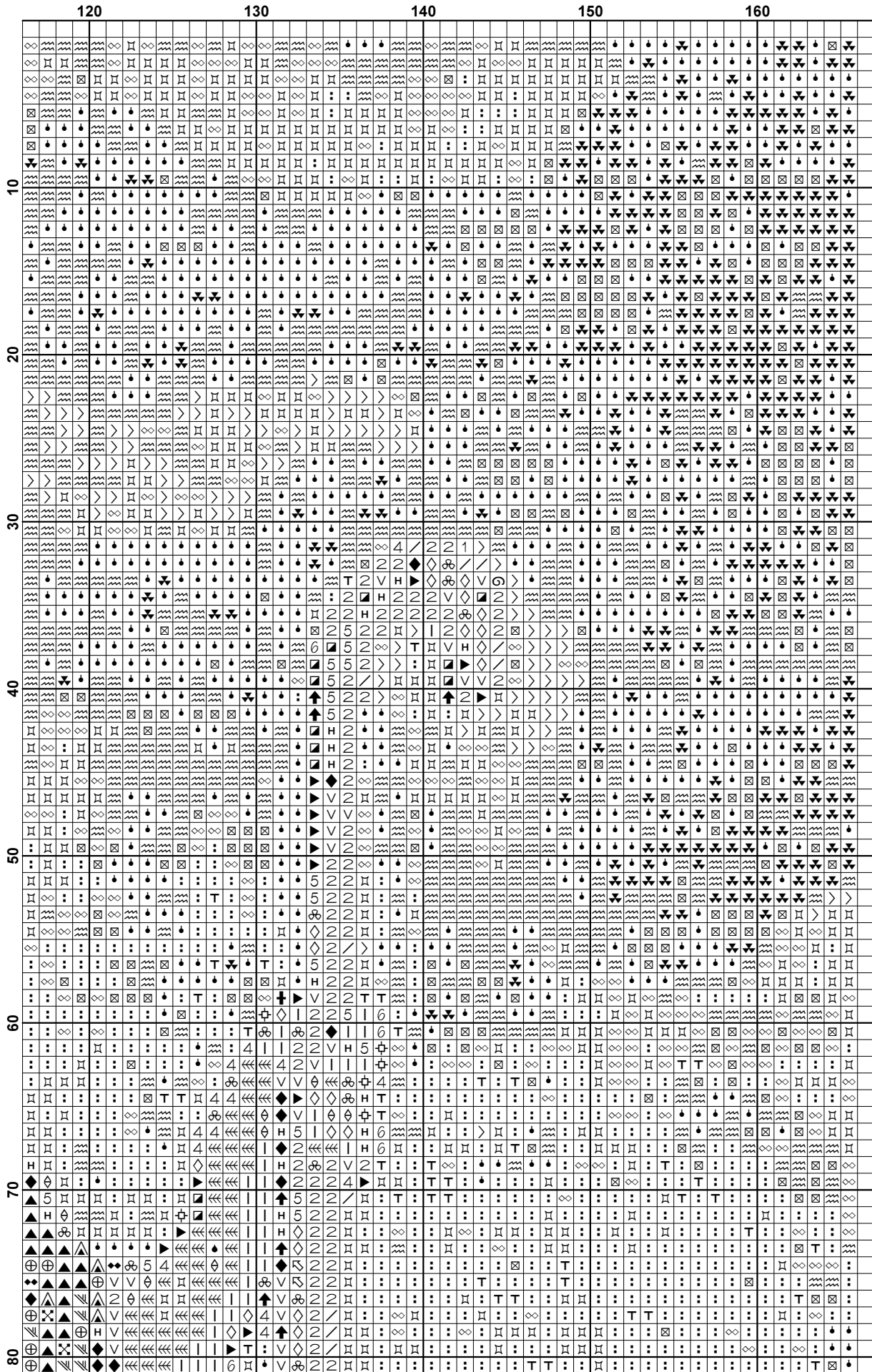
This pattern is offered totally free from Christian Cross Stitch. We offer one new free pattern on our website every Friday. Please see www.christiancrossstitch.com

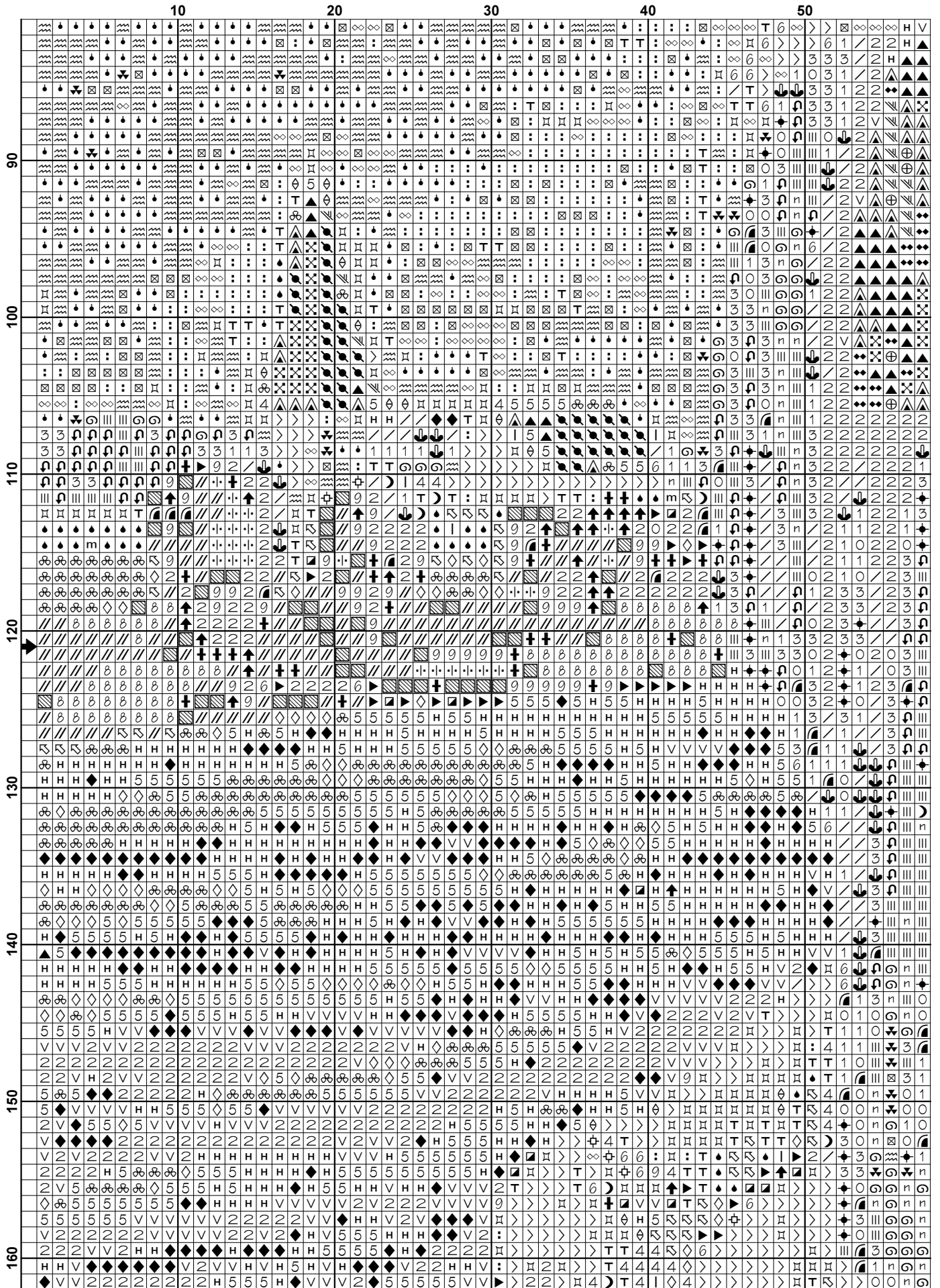
Please feel free to pass this pattern around to anyone for free. You cannot sell these patterns by themselves, however you can put the pattern together in a kit form and sell the kits or you can sell the completed stitched item.

Also see our other website at www.freecrossstitchonline.com

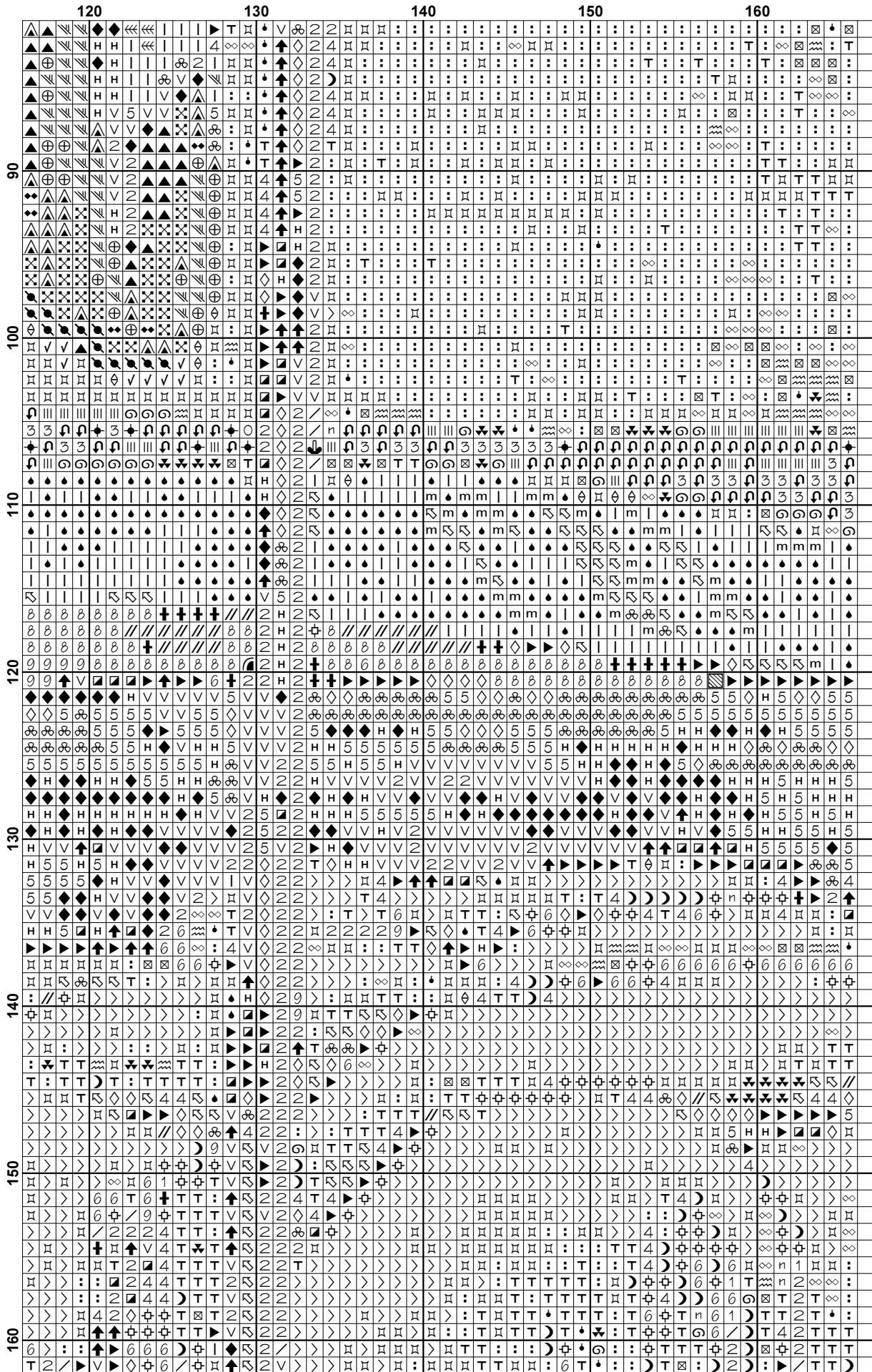


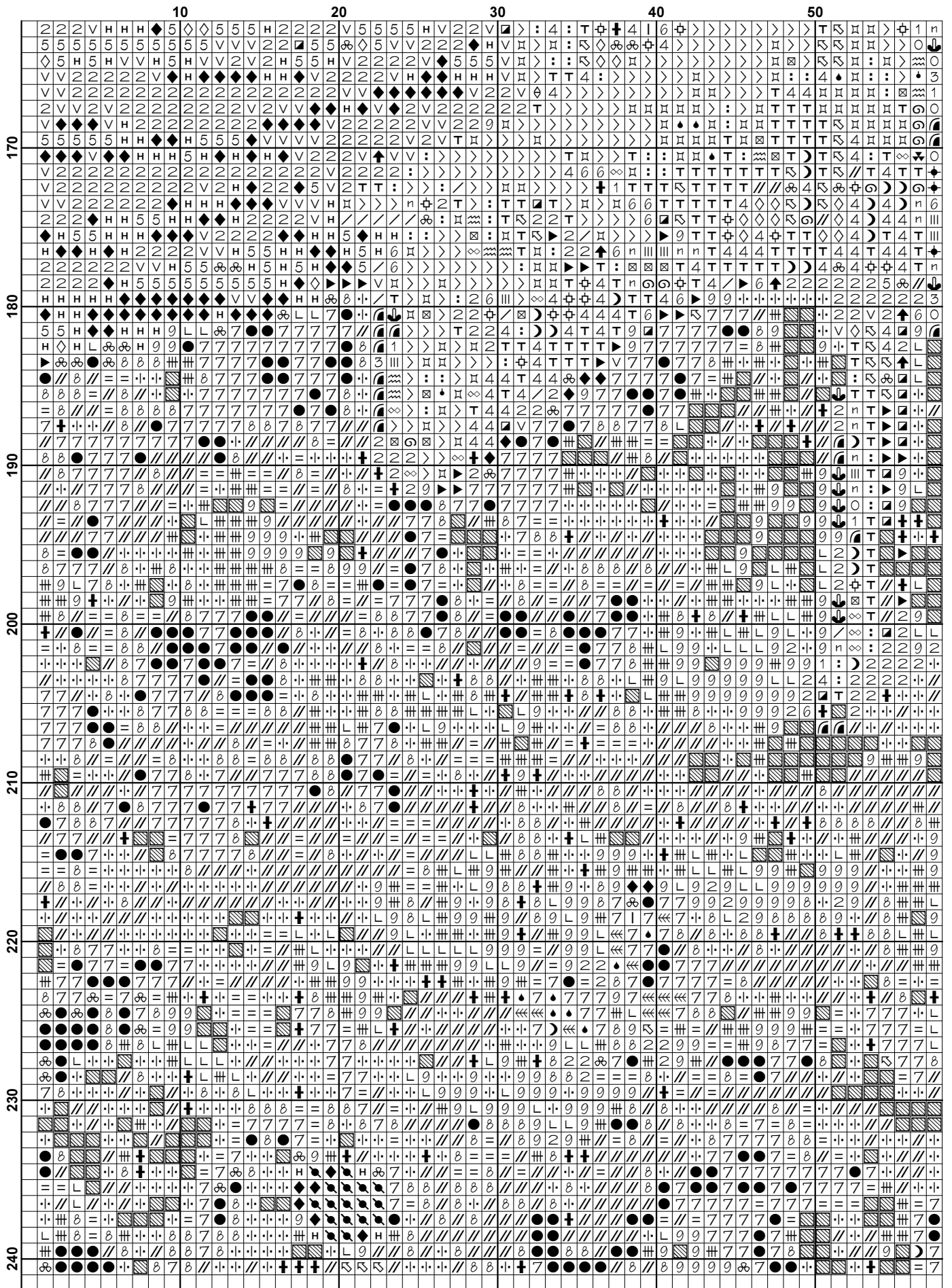


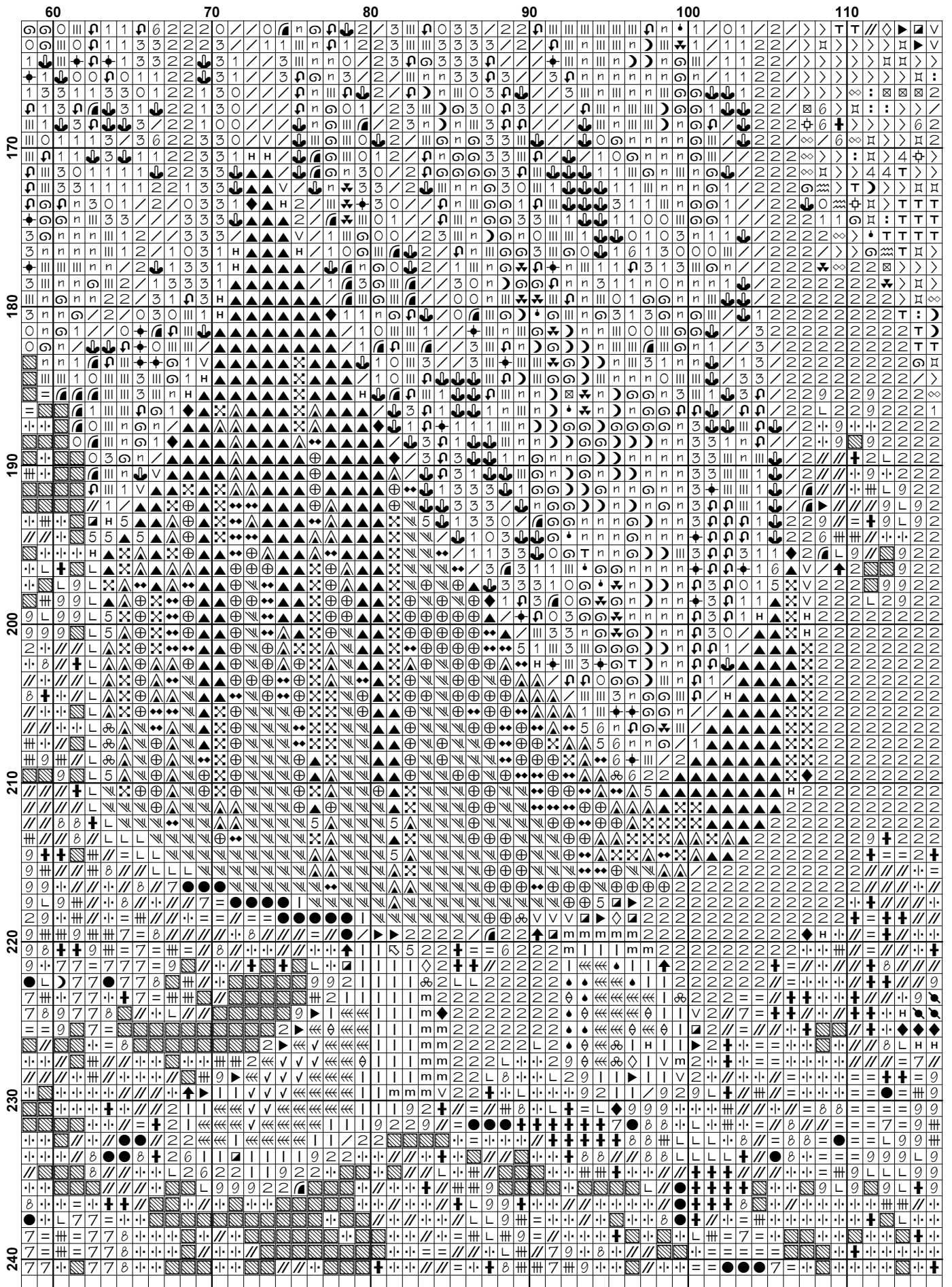


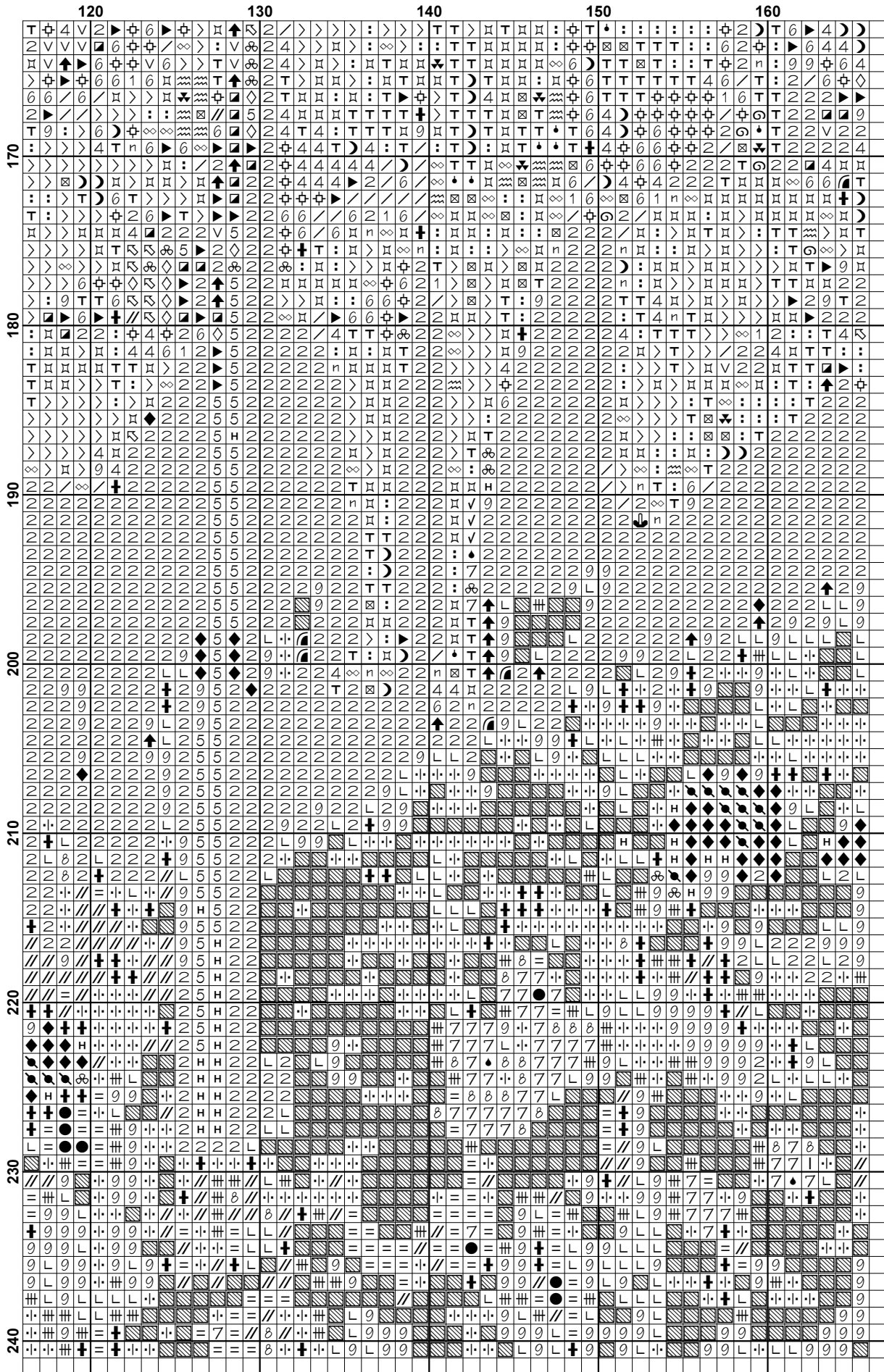


	60	70	80	90	100	110	120	130	140	150	160
90	◆	◆	◆	◆	◆	◆	◆	◆	◆	◆	◆
100	◆	◆	◆	◆	◆	◆	◆	◆	◆	◆	◆
110	◆	◆	◆	◆	◆	◆	◆	◆	◆	◆	◆
120	◆	◆	◆	◆	◆	◆	◆	◆	◆	◆	◆
130	◆	◆	◆	◆	◆	◆	◆	◆	◆	◆	◆
140	◆	◆	◆	◆	◆	◆	◆	◆	◆	◆	◆
150	◆	◆	◆	◆	◆	◆	◆	◆	◆	◆	◆
160	◆	◆	◆	◆	◆	◆	◆	◆	◆	◆	◆





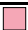















Pattern Name: Jesus with Lambs
Company: Christian Cross Stitch
Copyright: Copyright Christian Cross Stitch Online. All rights Reserved.
Fabric: Aida 14, White
 165w X 240h Stitches
Size(s): 14 Count, 11-3/4w X 17-1/8h in
 16 Count, 10-1/4w X 15h in
 18 Count, 9-1/8w X 13-1/4h in

Floss Used for Full Stitches:

Symbol	Strands	Type	Number	Color
	2	DMC	160	Gray Blue-MD
	2	DMC	161	Gray Blue
	2	DMC	310	Black
	2	DMC	312	Baby Blue-VY DK
	2	DMC	317	Pewter Gray
	2	DMC	318	Steel Gray-LT
	2	DMC	322	Baby Blue-DK
	2	DMC	413	Pewter Gray-DK
	2	DMC	436	Tan
	2	DMC	451	Shell Gray-DK
	2	DMC	471	Avocado Green-VY LT
	2	DMC	505	Jade
	2	DMC	520	Fern Green-DK
	2	DMC	602	Cranberry-MD
	2	DMC	677	Old Gold-VY LT
	2	DMC	718	Plum
	2	DMC	738	Tan-VY LT
	2	DMC	762	Pearl Gray-VY LT
	2	DMC	775	Baby Blue-VY LT
	2	DMC	794	Cornflower Blue-LT
	2	DMC	796	Royal Blue-DK
	2	DMC	797	Royal Blue
	2	DMC	798	Delft Blue-DK
	2	DMC	799	Delft Blue-MD
	2	DMC	820	Royal Blue-VY DK
	2	DMC	825	Blue-DK
	2	DMC	826	Blue-MD
	2	DMC	828	Blue-UL VY LT
	2	DMC	838	Beige Brown-VY DK
	2	DMC	839	Beige Brown-DK
	2	DMC	894	Carnation-VY LT
	2	DMC	895	Hunter Green-VY DK
	2	DMC	904	Parrot Green-VY DK
	2	DMC	928	Gray Green-VY LT
	2	DMC	932	Antique Blue-LT
	2	DMC	951	Tawny-LT
	2	DMC	961	Dusty Rose-DK
	2	DMC	962	Dusty Rose-MD
	2	DMC	987	Forest Green-DK
	2	DMC	988	Forest Green-MD
	2	DMC	989	Forest Green
	2	DMC	3072	Beaver Gray-VY LT
	2	DMC	3325	Baby Blue-LT
	2	DMC	3346	Hunter Green
	2	DMC	3348	Yellow Green-LT
	2	DMC	3363	Pine Green-MD
	2	DMC	3371	Black Brown

Symbol	Strands	Type	Number	Color
	2	DMC	3708	Melon-LT
	2	DMC	3713	Salmon-VY LT
	2	DMC	3753	Antique Blue-UL VY LT
	2	DMC	3770	Tawny-VY LT
	2	DMC	3799	Pewter Gray-VY DK
	2	DMC	3831	Raspberry-DK
	2	DMC	3841	Baby Blue-Pale
	2	DMC	3860	Cocoa
	2	DMC	3861	Cocoa-LT
	2	DMC	3864	Mocha Beige-LT
	2	DMC	3865	Winter White
	2	DMC	Ecru	Ecru

Notes:








You should begin at the centre of the pattern. Follow the arrows at the top and on the left to find the centre. Look in the corners to see the numbers in brackets to put the patterns together. As the pattern has a few pages, the easiest way to stitch it is to stitch one page at a time. This pattern is offered totally free from Christian Cross Stitch. We offer one new free pattern on our website every Friday. Please see www.christiancrossstitch.com Please feel free to pass this pattern around to anyone for free. You cannot sell these patterns by themselves, however you can put the pattern together in a kit form and sell the kits with the fabric and floss or you can sell the completed stitched item. You cannot claim the pattern as your own or alter it in anyway and Christian Cross Stitch will not accept any liability for the sale of kits or completed items. We also have another website at www.freecrossstitchonline.com

Usage Summary

Strands Per Skein: 6

Skein Length: 313.0 in

Type	Number	Full	Half	Quarter	Petite	Back(in)	Str(in)	Spec(in)	French	Bead	Skein Est.
DMC 160	160	226	0	0	0	0.0	0.0	0.0	0	0	1.000
DMC 161	161	201	0	0	0	0.0	0.0	0.0	0	0	1.000
DMC 310	310	3339	0	0	0	0.0	0.0	0.0	0	0	2.000
DMC 312	312	123	0	0	0	0.0	0.0	0.0	0	0	1.000
DMC 317	317	249	0	0	0	0.0	0.0	0.0	0	0	1.000
DMC 318	318	252	0	0	0	0.0	0.0	0.0	0	0	1.000
DMC 322	322	142	0	0	0	0.0	0.0	0.0	0	0	1.000
DMC 413	413	125	0	0	0	0.0	0.0	0.0	0	0	1.000
DMC 436	436	67	0	0	0	0.0	0.0	0.0	0	0	1.000
DMC 451	451	280	0	0	0	0.0	0.0	0.0	0	0	1.000
DMC 471	471	231	0	0	0	0.0	0.0	0.0	0	0	1.000
DMC 505	505	1066	0	0	0	0.0	0.0	0.0	0	0	1.000
DMC 520	520	355	0	0	0	0.0	0.0	0.0	0	0	1.000
DMC 602	602	372	0	0	0	0.0	0.0	0.0	0	0	1.000
DMC 677	677	680	0	0	0	0.0	0.0	0.0	0	0	1.000
DMC 718	718	755	0	0	0	0.0	0.0	0.0	0	0	1.000
DMC 738	738	390	0	0	0	0.0	0.0	0.0	0	0	1.000
DMC 762	762	1402	0	0	0	0.0	0.0	0.0	0	0	1.000
DMC 775	775	2352	0	0	0	0.0	0.0	0.0	0	0	2.000
DMC 794	794	450	0	0	0	0.0	0.0	0.0	0	0	1.000
DMC 796	796	390	0	0	0	0.0	0.0	0.0	0	0	1.000
DMC 797	797	636	0	0	0	0.0	0.0	0.0	0	0	1.000
DMC 798	798	853	0	0	0	0.0	0.0	0.0	0	0	1.000
DMC 799	799	607	0	0	0	0.0	0.0	0.0	0	0	1.000
DMC 820	820	696	0	0	0	0.0	0.0	0.0	0	0	1.000
DMC 825	825	378	0	0	0	0.0	0.0	0.0	0	0	1.000
DMC 826	826	485	0	0	0	0.0	0.0	0.0	0	0	1.000
DMC 828	828	2435	0	0	0	0.0	0.0	0.0	0	0	2.000
DMC 838	838	719	0	0	0	0.0	0.0	0.0	0	0	1.000
DMC 839	839	795	0	0	0	0.0	0.0	0.0	0	0	1.000
DMC 894	894	542	0	0	0	0.0	0.0	0.0	0	0	1.000
DMC 895	895	634	0	0	0	0.0	0.0	0.0	0	0	1.000
DMC 904	904	359	0	0	0	0.0	0.0	0.0	0	0	1.000
DMC 928	928	675	0	0	0	0.0	0.0	0.0	0	0	1.000
DMC 932	932	194	0	0	0	0.0	0.0	0.0	0	0	1.000
DMC 951	951	196	0	0	0	0.0	0.0	0.0	0	0	1.000
DMC 961	961	403	0	0	0	0.0	0.0	0.0	0	0	1.000
DMC 962	962	197	0	0	0	0.0	0.0	0.0	0	0	1.000
DMC 987	987	1160	0	0	0	0.0	0.0	0.0	0	0	1.000
DMC 988	988	1055	0	0	0	0.0	0.0	0.0	0	0	1.000
DMC 989	989	375	0	0	0	0.0	0.0	0.0	0	0	1.000
DMC 3072	3072	2489	0	0	0	0.0	0.0	0.0	0	0	2.000
DMC 3325	3325	329	0	0	0	0.0	0.0	0.0	0	0	1.000
DMC 3346	3346	528	0	0	0	0.0	0.0	0.0	0	0	1.000
DMC 3348	3348	481	0	0	0	0.0	0.0	0.0	0	0	1.000
DMC 3363	3363	327	0	0	0	0.0	0.0	0.0	0	0	1.000
DMC 3371	3371	661	0	0	0	0.0	0.0	0.0	0	0	1.000
DMC 3708	3708	589	0	0	0	0.0	0.0	0.0	0	0	1.000
DMC 3713	3713	73	0	0	0	0.0	0.0	0.0	0	0	1.000
DMC 3753	3753	837	0	0	0	0.0	0.0	0.0	0	0	1.000
DMC 3770	3770	32	0	0	0	0.0	0.0	0.0	0	0	1.000
DMC 3799	3799	115	0	0	0	0.0	0.0	0.0	0	0	1.000

Type	Number	Full	Half	Quarter	Petite	Back(in)	Str(in)	Spec(in)	French	Bead	Skein Est.
 DMC	3831	121	0	0	0	0.0	0.0	0.0	0	0	1.000
 DMC	3841	947	0	0	0	0.0	0.0	0.0	0	0	1.000
 DMC	3860	743	0	0	0	0.0	0.0	0.0	0	0	1.000
 DMC	3861	432	0	0	0	0.0	0.0	0.0	0	0	1.000
 DMC	3864	246	0	0	0	0.0	0.0	0.0	0	0	1.000
 DMC	3865	1357	0	0	0	0.0	0.0	0.0	0	0	1.000
 DMC	Ecru	2452	0	0	0	0.0	0.0	0.0	0	0	2.000