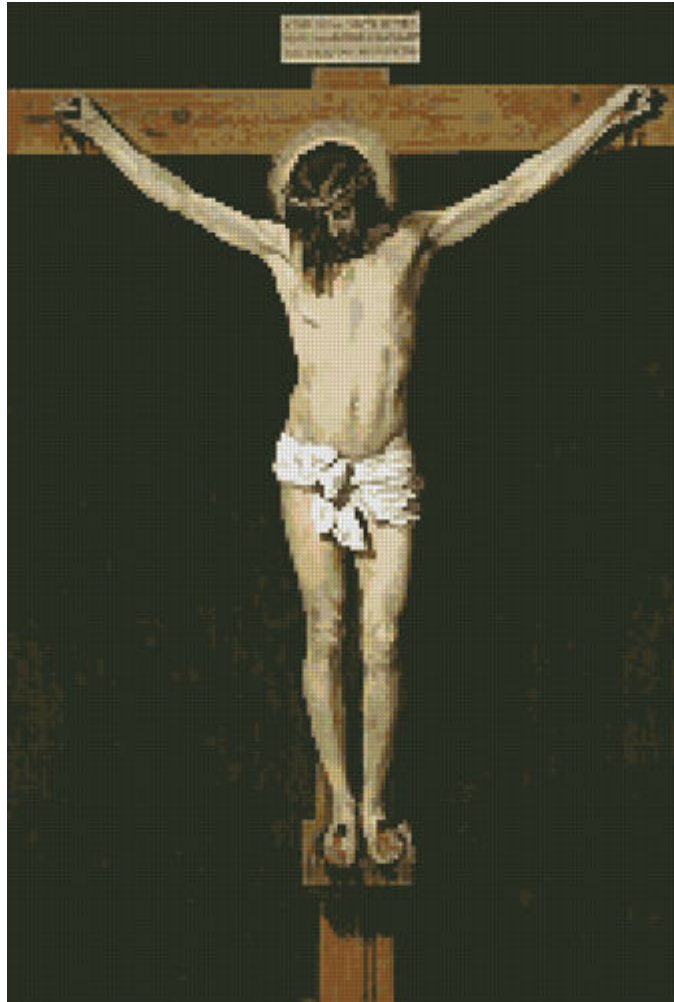


The Crucifixion

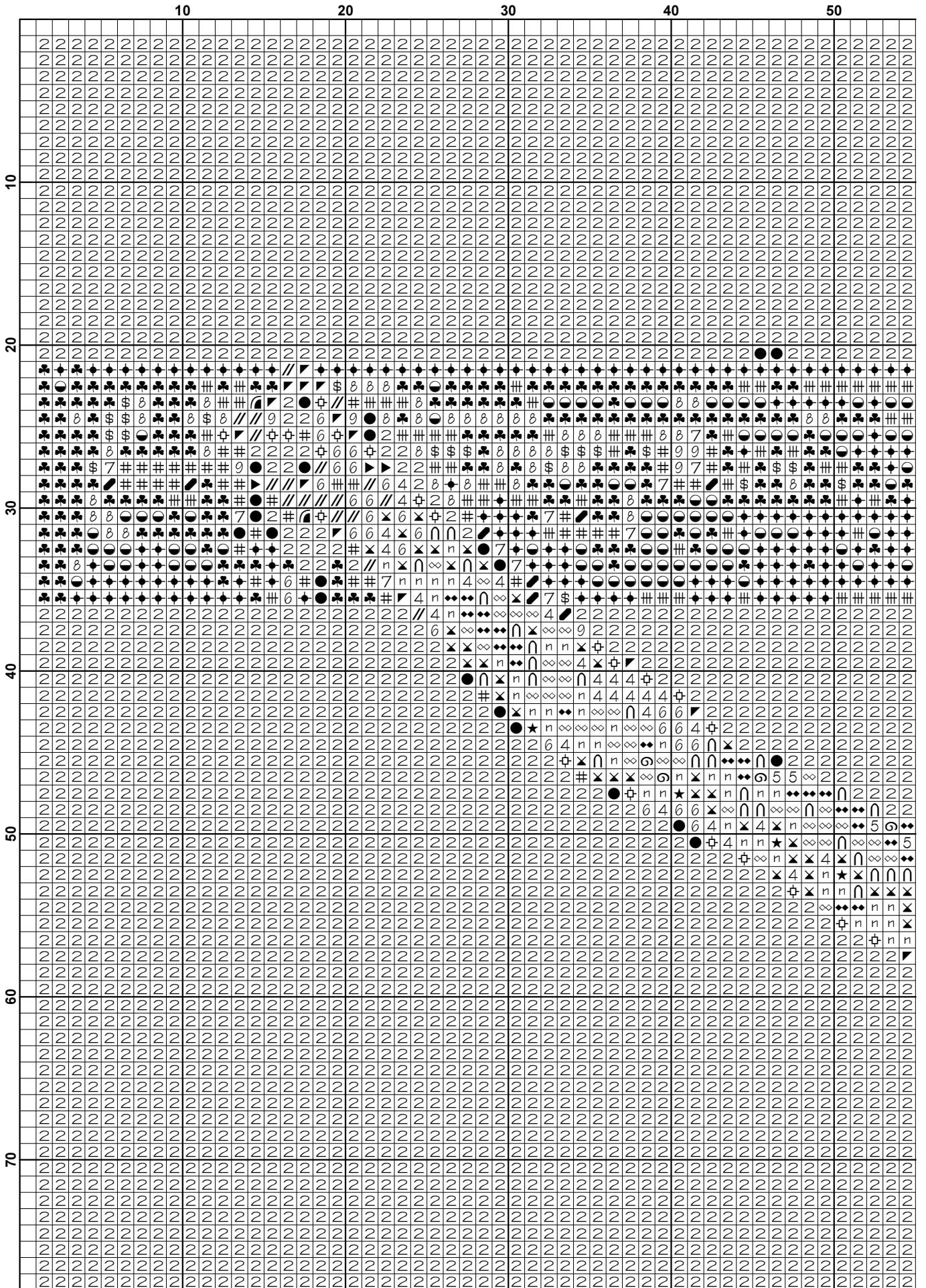
www.christiancrossstitch.com

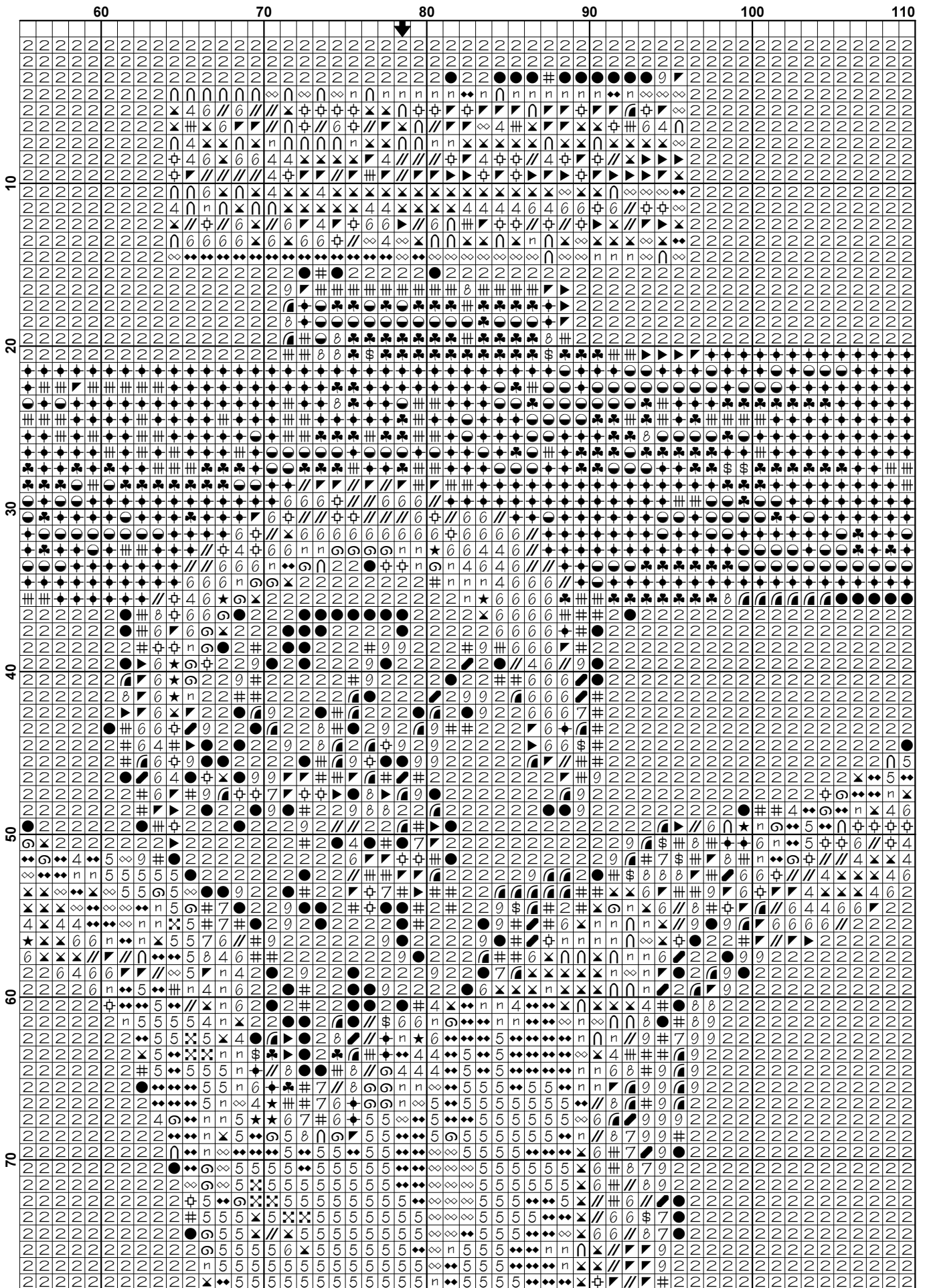


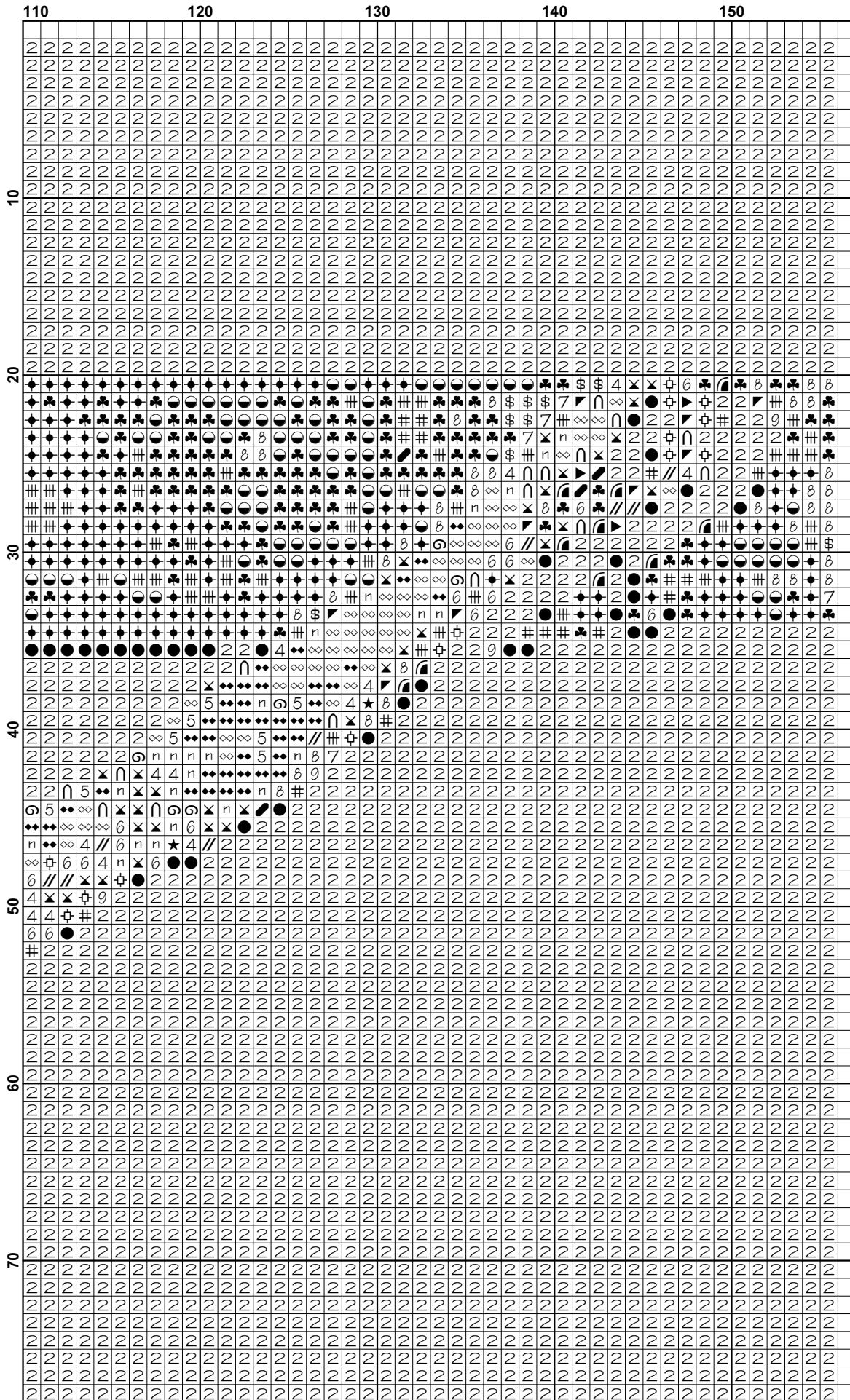
This pattern is offered totally free from Christian Cross Stitch. We offer one new free pattern on our website every Friday. Please see www.christiancrossstitch.com

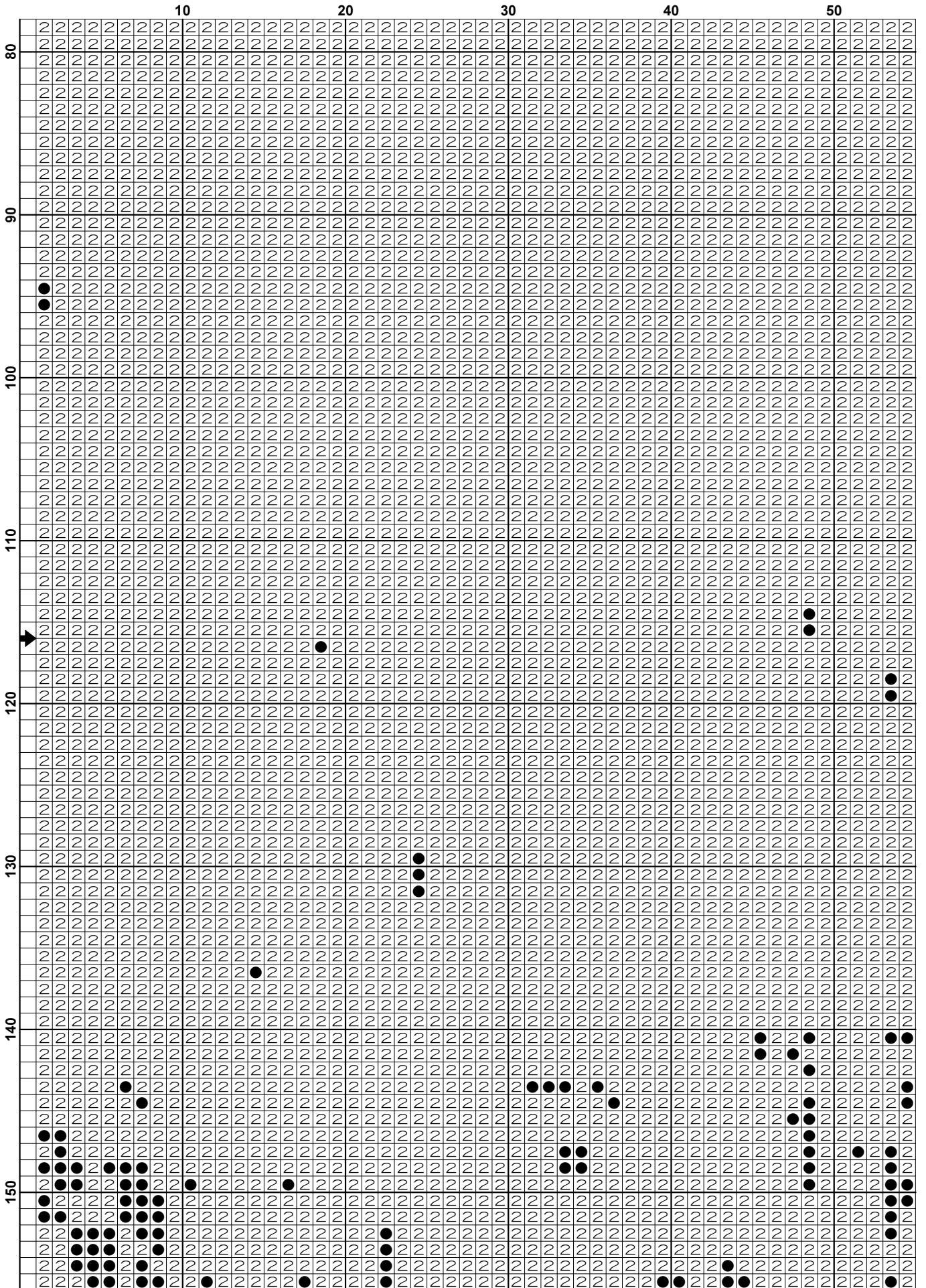
Please feel free to pass this pattern around to anyone for free. You cannot sell these patterns by themselves, however you can put the pattern together in a kit form and sell the kits or you can sell the completed stitched item.

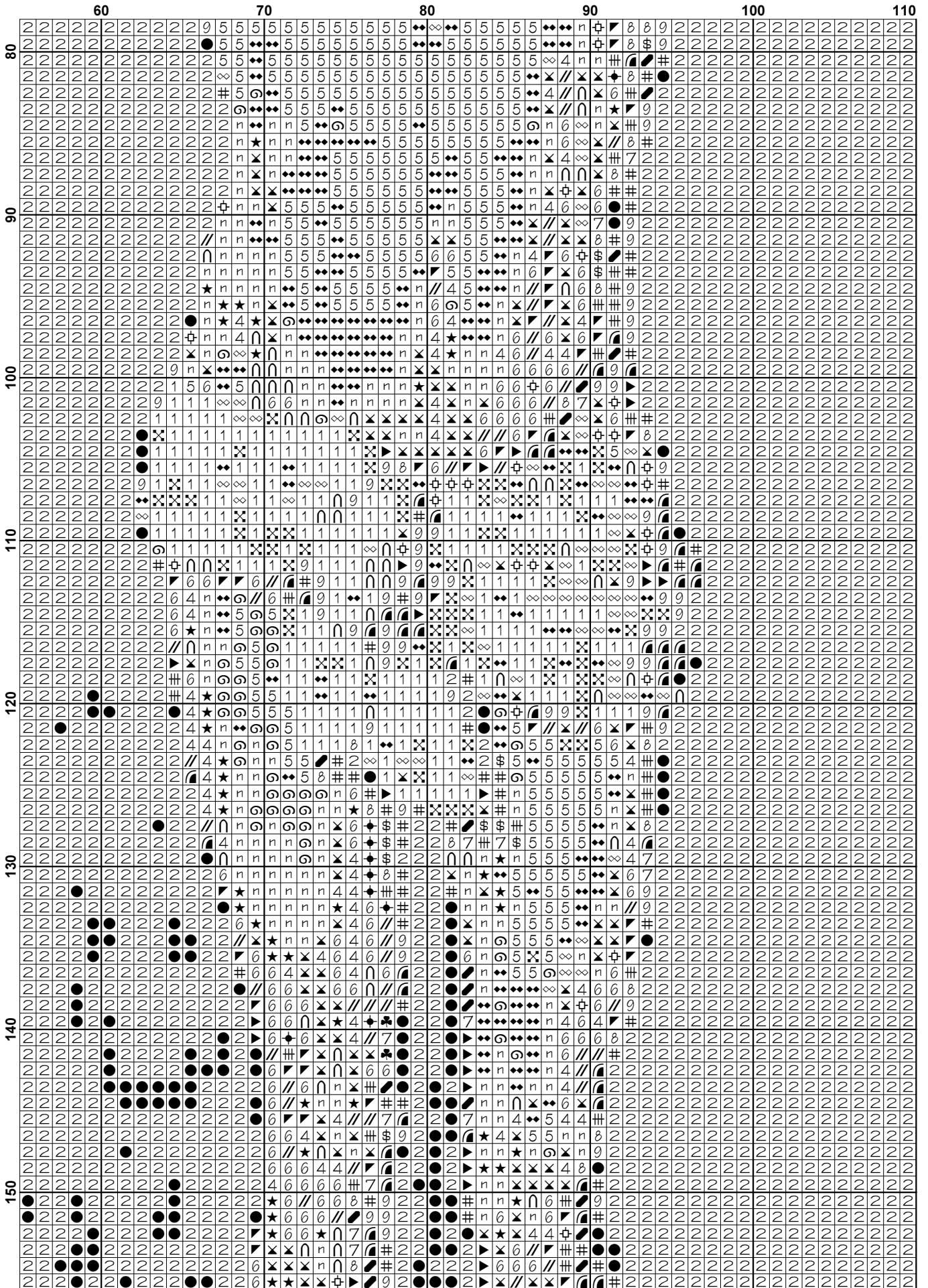
Also see our other website at www.freecrossstitchonline.com

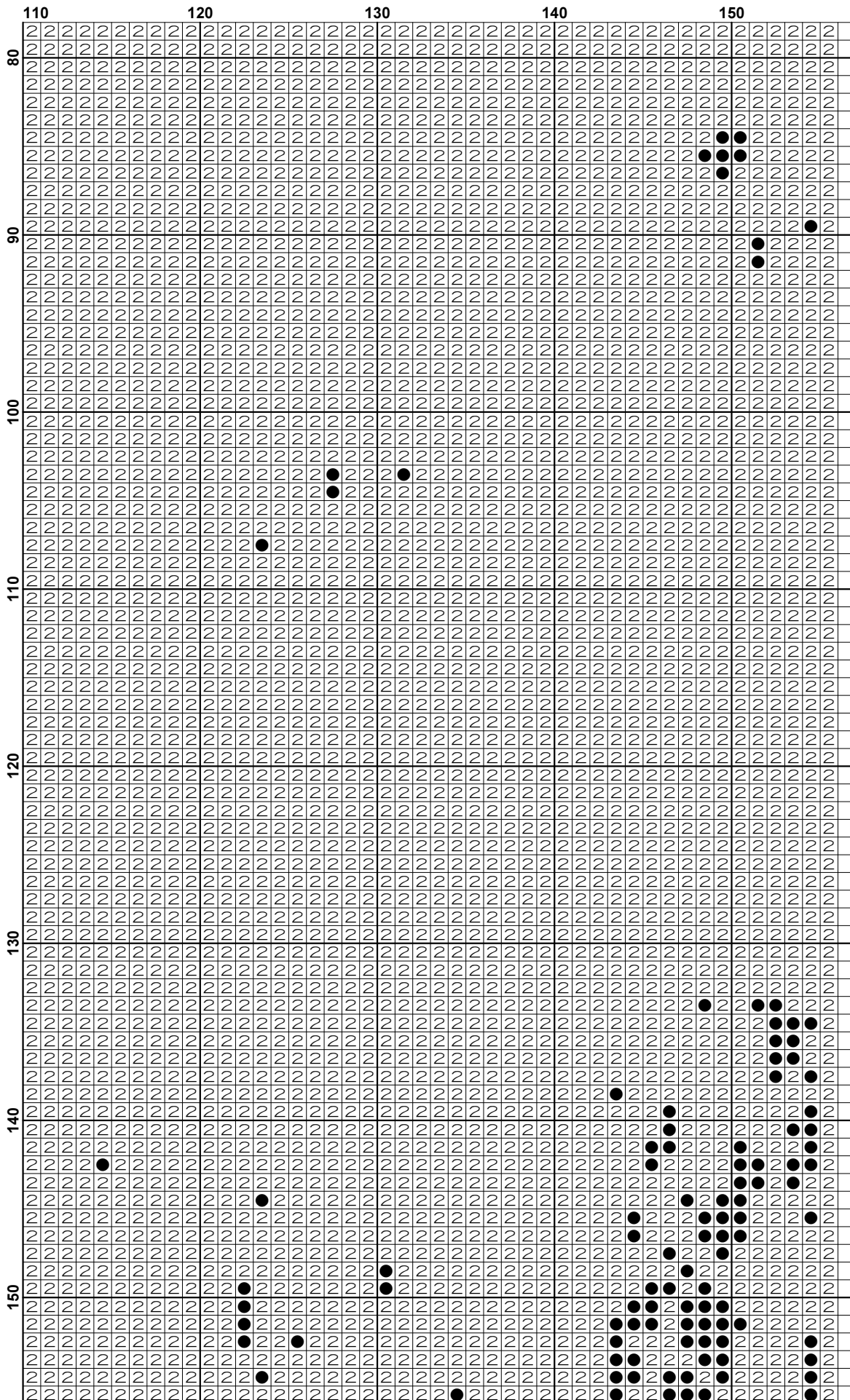


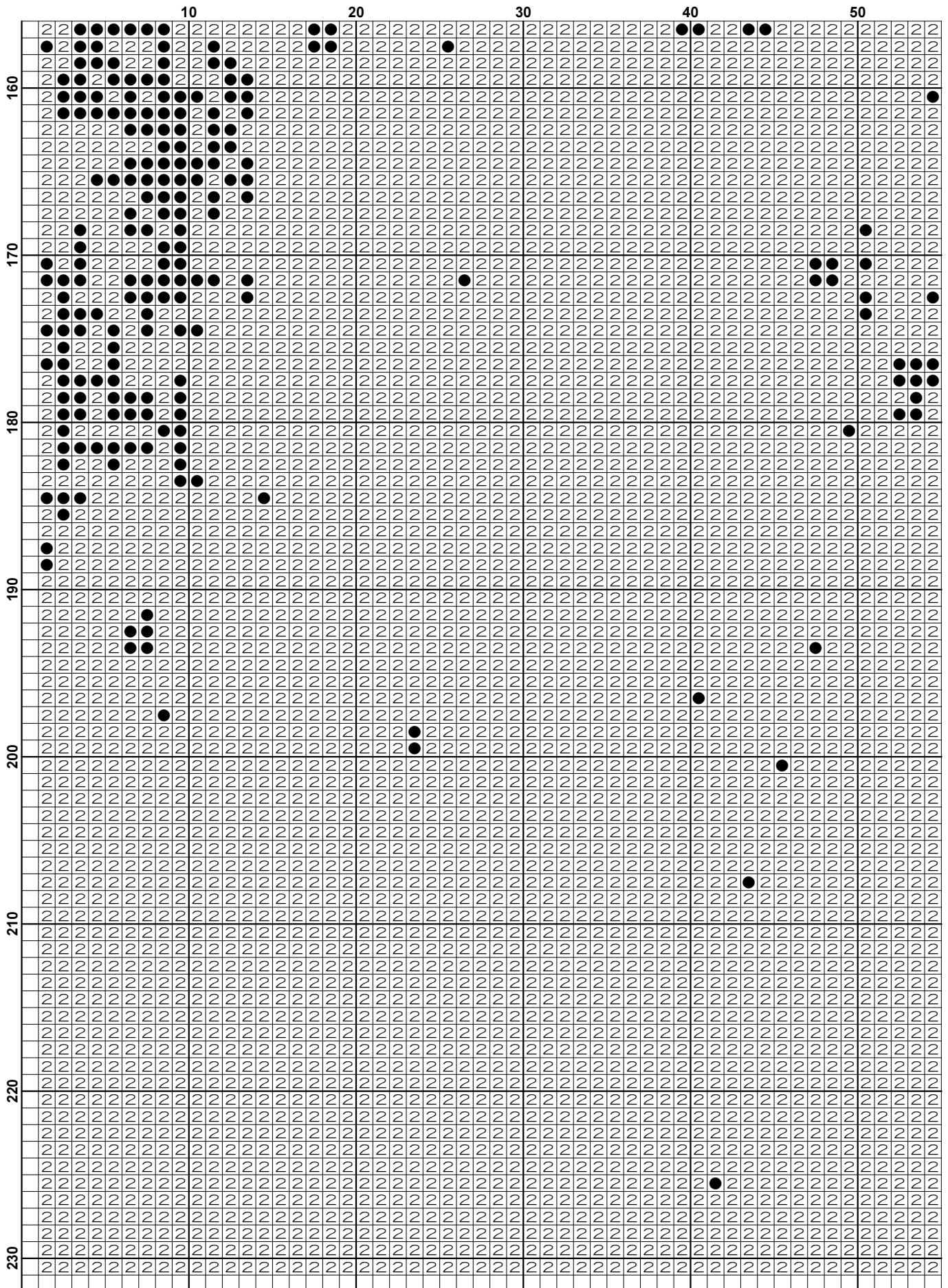


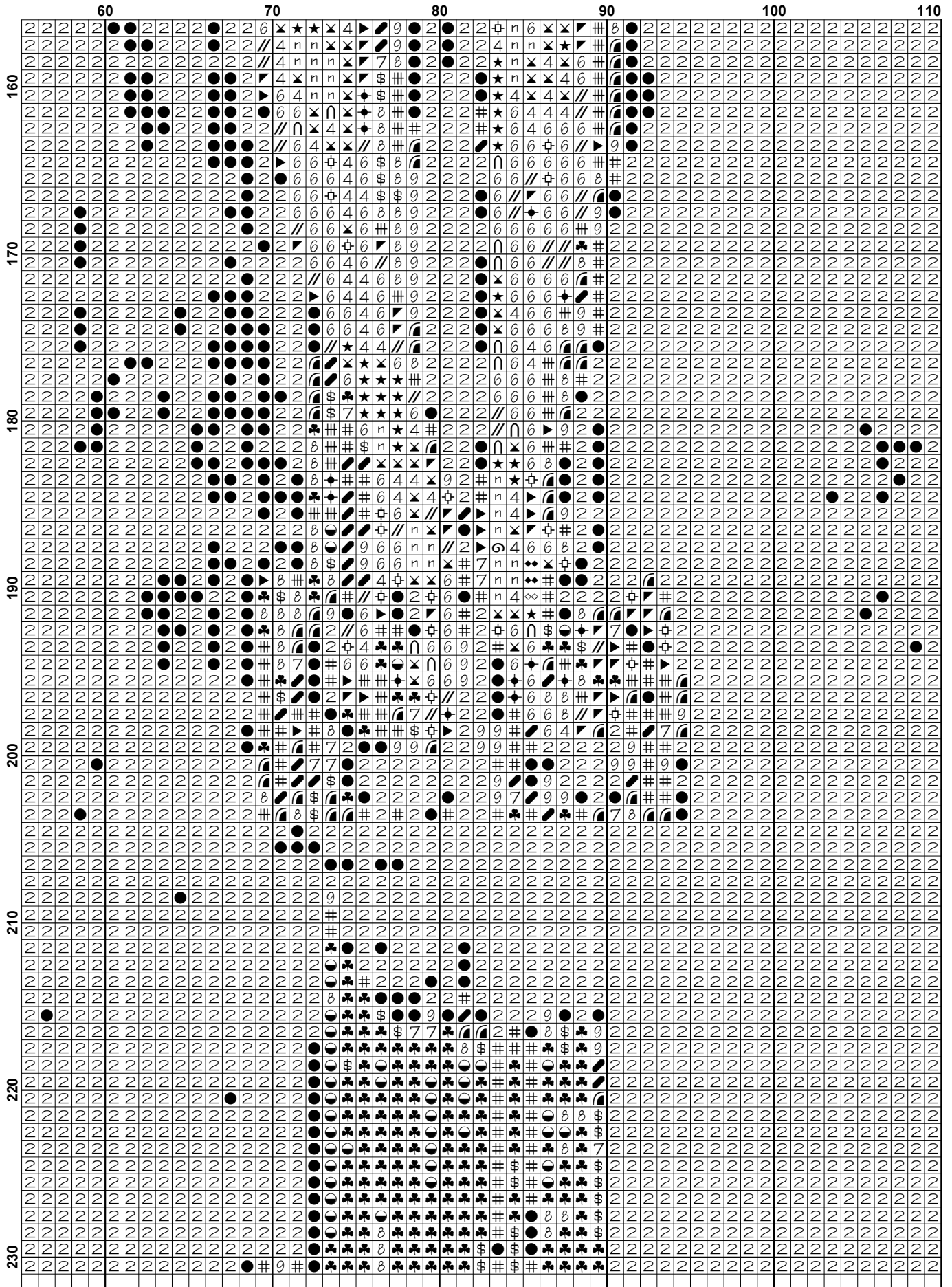


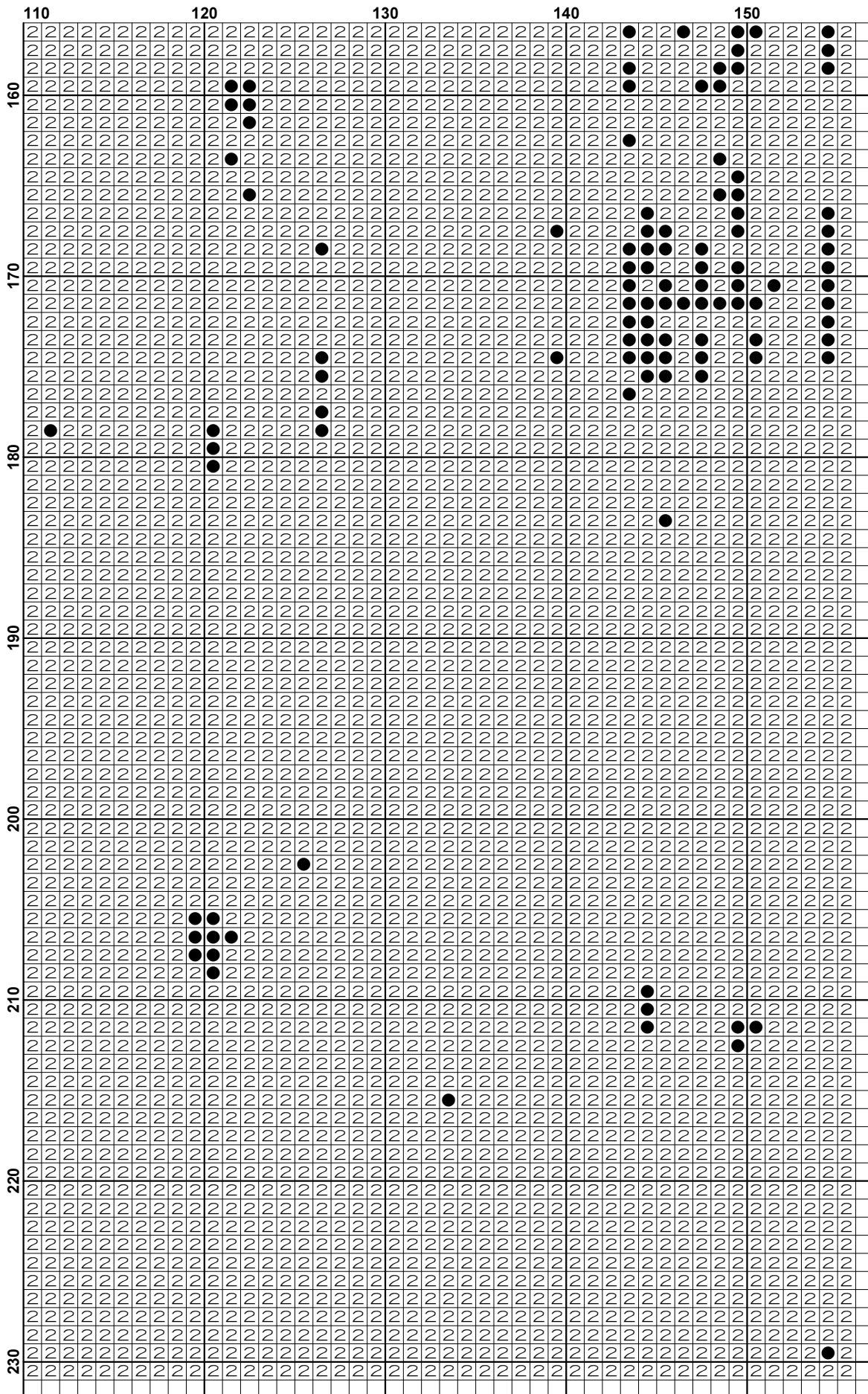









































Pattern Name: The Crucifixion
Designed By: by Diego Velazquez
Company: Christian Cross Stitch
Copyright: Copyright Christian Cross Stitch Online. All rights Reserved.
Fabric: Aida 14, White
 155w X 230h Stitches
Size(s): 14 Count, 11w X 16-3/8h in
 16 Count, 9-5/8w X 14-3/8h in
 18 Count, 8-1/2w X 12-3/4h in

Floss Used for Full Stitches:

Symbol	Strands	Type	Number	Color
	2	DMC	310	Black
	4	DMC	372	Mustard-LT
	2	DMC	420	Hazelnut Brown-DK
	2	DMC	422	Hazelnut Brown-LT
	2	DMC	433	Brown-MD
	2	DMC	434	Brown-LT
	2	DMC	612	Drab Brown-LT
	2	DMC	738	Tan-VY LT
	2	DMC	739	Tan-UL VY LT
	2	DMC	801	Coffee Brown-DK
	2	DMC	838	Beige Brown-VY DK
	2	DMC	839	Beige Brown-DK
	2	DMC	840	Beige Brown-MD
	2	DMC	841	Beige Brown-LT
	2	DMC	842	Beige Brown-VY LT
	2	DMC	869	Hazelnut Brown-VY DK
	2	DMC	898	Coffee Brown-VY DK
	2	DMC	938	Coffee Brown-UL DK
	2	DMC	945	Tawny
	2	DMC	951	Tawny-LT
	2	DMC	975	Golden Brown-DK
	2	DMC	3371	Black Brown
	2	DMC	3770	Tawny-VY LT
	2	DMC	3782	Mocha Brown-LT
	2	DMC	3790	Beige Gray-UL DK
	2	DMC	3862	Mocha Beige-DK
	2	DMC	3863	Mocha Beige-MD
	2	DMC	3864	Mocha Beige-LT
	1	DMC	3865	Winter White

Notes:

You should begin at the centre of the pattern. Follow the arrows at the top and on the left to find the centre. Look in the corners to see the numbers in brackets to put the patterns together.

As the pattern has a few pages, the easiest way to stitch it is to stitch one page at a time.

This pattern is offered totally free from Christian Cross Stitch. We offer one new free pattern on our website every Friday. Please see www.christiancrossstitch.com

Please feel free to pass this pattern around to anyone for free. You cannot sell these patterns by themselves, however you can put the pattern together in a kit form and sell the kits with the fabric and floss or you can sell the completed stitched item. You cannot claim the pattern as your own or alter it in anyway and Christian Cross Stitch will not accept any liability for the sale of kits or completed items.

We also have another website at www.freecrossstitchonline.com

Usage Summary

Strands Per Skein: 6

Skein Length: 313.0 in

Type	Number	Full	Half	Quarter	Petite	Back(in)	Str(in)	Spec(in)	French	Bead	Skein Est.
■ DMC	310	27297	0	0	0	0.0	0.0	0.0	0	0	12.000
■ DMC	372	215	0	0	0	0.0	0.0	0.0	0	0	1.000
■ DMC	420	770	0	0	0	0.0	0.0	0.0	0	0	1.000
■ DMC	422	92	0	0	0	0.0	0.0	0.0	0	0	1.000
■ DMC	433	92	0	0	0	0.0	0.0	0.0	0	0	1.000
■ DMC	434	360	0	0	0	0.0	0.0	0.0	0	0	1.000
■ DMC	612	464	0	0	0	0.0	0.0	0.0	0	0	1.000
■ DMC	738	409	0	0	0	0.0	0.0	0.0	0	0	1.000
■ DMC	739	391	0	0	0	0.0	0.0	0.0	0	0	1.000
■ DMC	801	64	0	0	0	0.0	0.0	0.0	0	0	1.000
■ DMC	838	205	0	0	0	0.0	0.0	0.0	0	0	1.000
■ DMC	839	179	0	0	0	0.0	0.0	0.0	0	0	1.000
■ DMC	840	183	0	0	0	0.0	0.0	0.0	0	0	1.000
■ DMC	841	170	0	0	0	0.0	0.0	0.0	0	0	1.000
■ DMC	842	252	0	0	0	0.0	0.0	0.0	0	0	1.000
■ DMC	869	208	0	0	0	0.0	0.0	0.0	0	0	1.000
■ DMC	898	81	0	0	0	0.0	0.0	0.0	0	0	1.000
■ DMC	938	303	0	0	0	0.0	0.0	0.0	0	0	1.000
■ DMC	945	102	0	0	0	0.0	0.0	0.0	0	0	1.000
■ DMC	951	499	0	0	0	0.0	0.0	0.0	0	0	1.000
■ DMC	975	644	0	0	0	0.0	0.0	0.0	0	0	1.000
■ DMC	3371	1131	0	0	0	0.0	0.0	0.0	0	0	1.000
■ DMC	3770	91	0	0	0	0.0	0.0	0.0	0	0	1.000
■ DMC	3782	177	0	0	0	0.0	0.0	0.0	0	0	1.000
■ DMC	3790	85	0	0	0	0.0	0.0	0.0	0	0	1.000
■ DMC	3862	319	0	0	0	0.0	0.0	0.0	0	0	1.000
■ DMC	3863	205	0	0	0	0.0	0.0	0.0	0	0	1.000
■ DMC	3864	430	0	0	0	0.0	0.0	0.0	0	0	1.000
■ DMC	3865	232	0	0	0	0.0	0.0	0.0	0	0	1.000